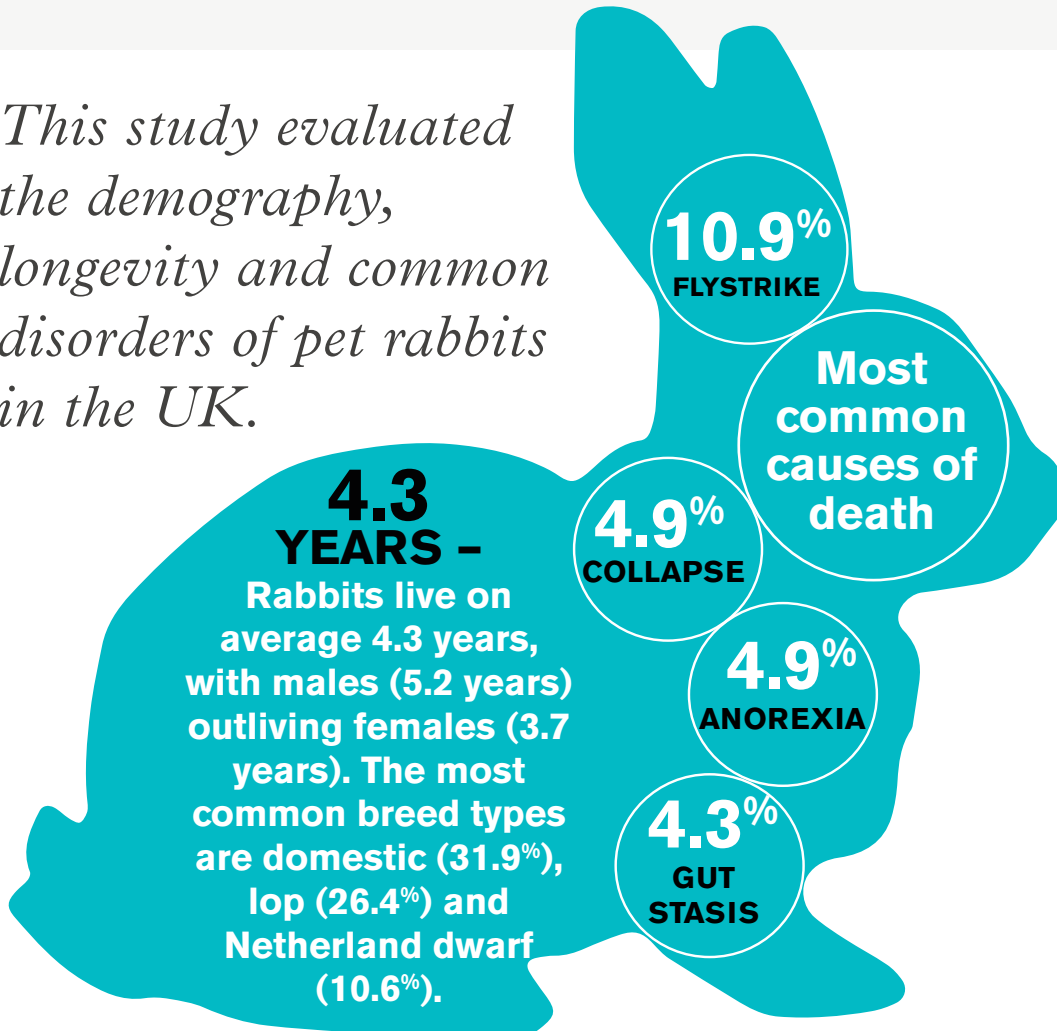


Pet rabbit health: heads or tails

This study evaluated the demography, longevity and common disorders of pet rabbits in the UK.



CONCLUSIONS

- Many common disorders are associated with inappropriate housing or feeding.
- Rabbits evolved as prey species and can disguise external signs of disease, making it hard for owners to spot that their rabbit is ill.
- This study can help improve the lives of rabbits by helping owners and vets recognise the common health problems and prioritise key management factors that will improve the lives of our rabbits.

The study included 6,349 rabbits attending 107 veterinary clinics across the UK. O'Neill, D.G. et al. (2019) 'Morbidity and mortality of domestic rabbits (*Oryctolagus cuniculus*) under primary veterinary care in England', *Vet Record* (Free Open Access)

