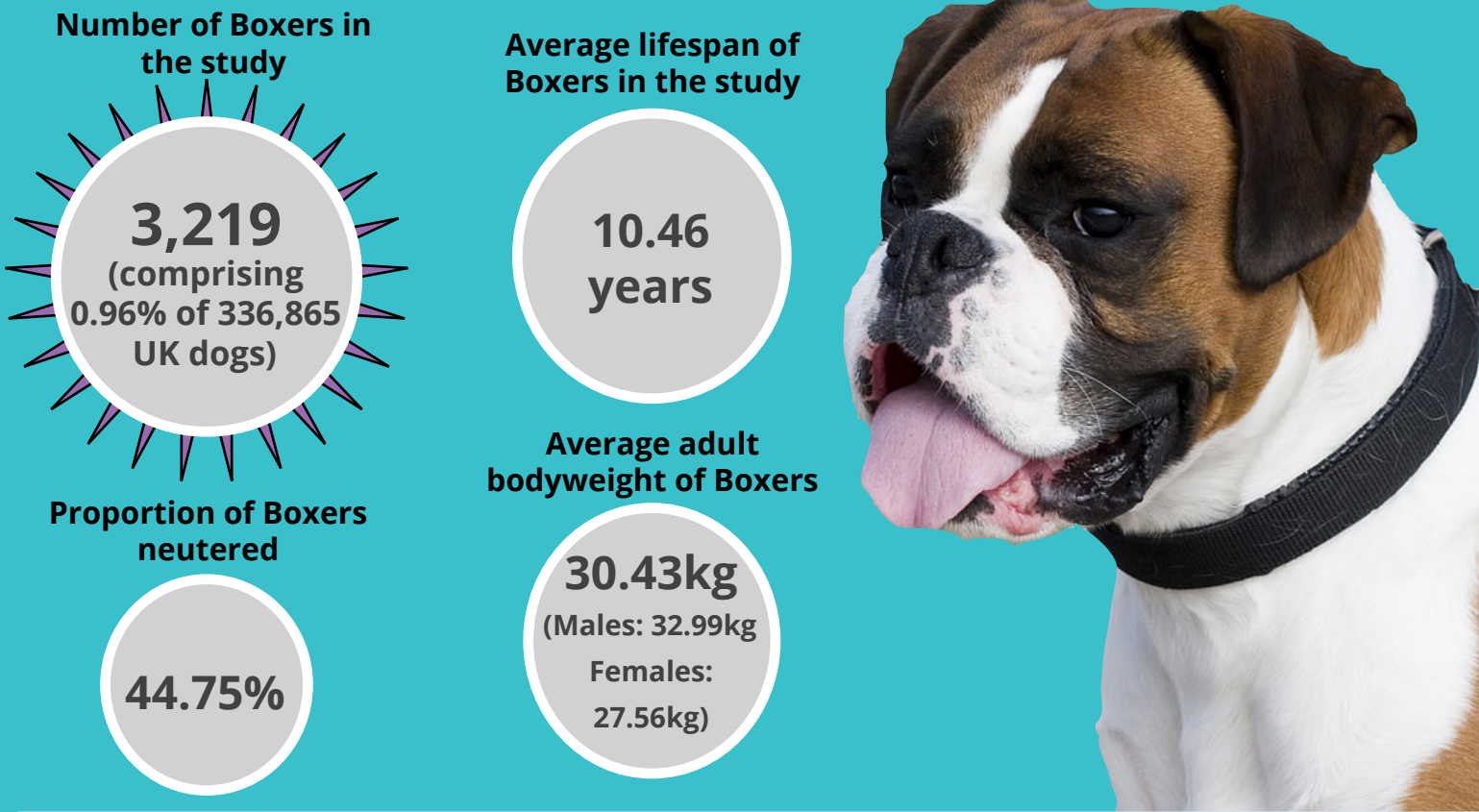
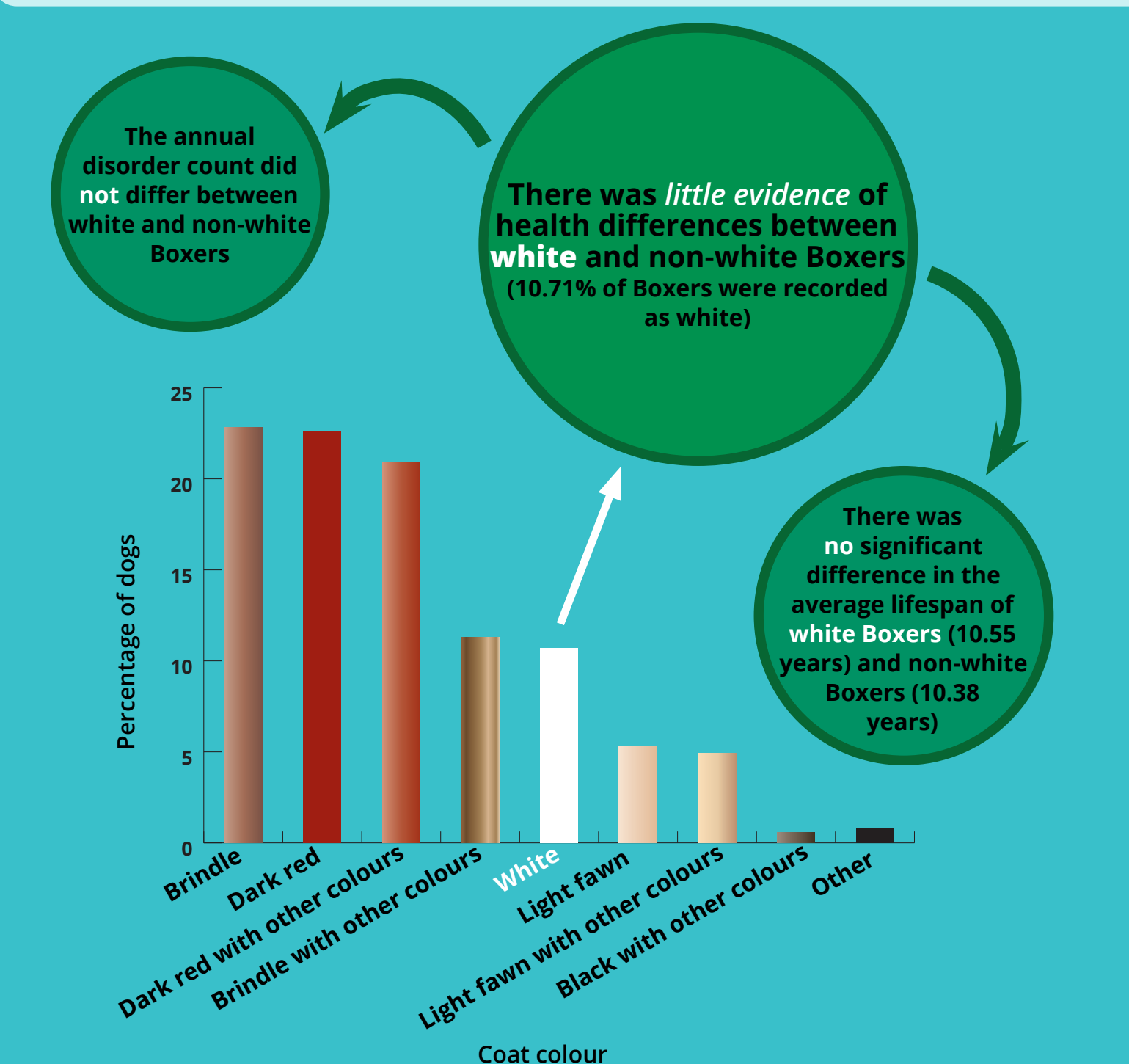


The Boxer is a popular dog breed in the UK with a distinctive appearance. However, despite its popularity, there is limited evidence on the overall health status of Boxers. White colouring in Boxers has been linked to a higher risk of deafness from birth. Because Boxers have relatively flattened faces (brachycephaly), there has also been concern that they may be more likely to have typically associated health problems.

This study aimed to describe the demography, mortality and common disorders of Boxers in the UK using information from anonymised veterinary clinical records in the VetCompass™ Programme.

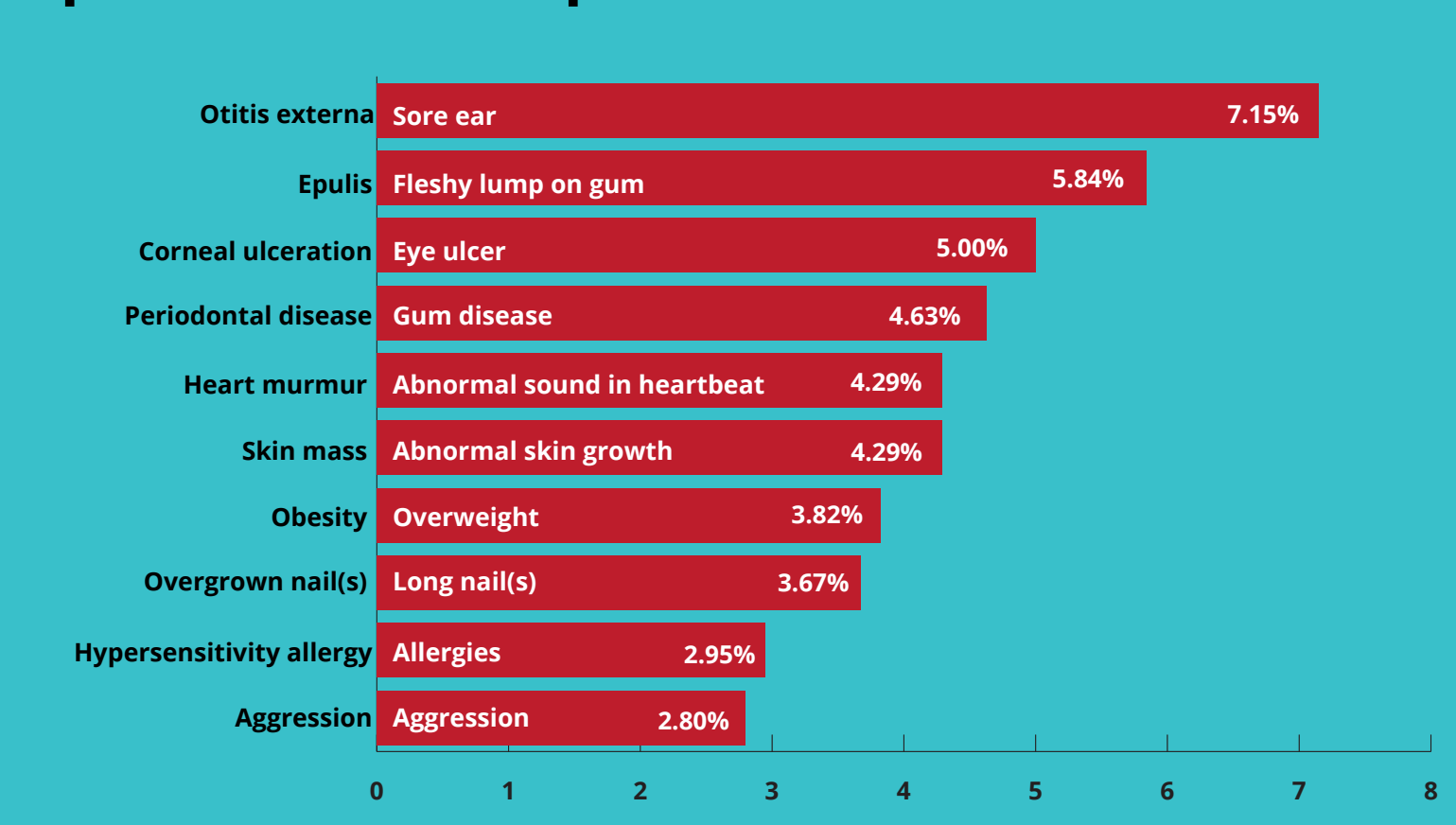


Most common coat colours



Most commonly diagnosed specific disorders

Top 10 most common specific disorders in Boxers in 2016

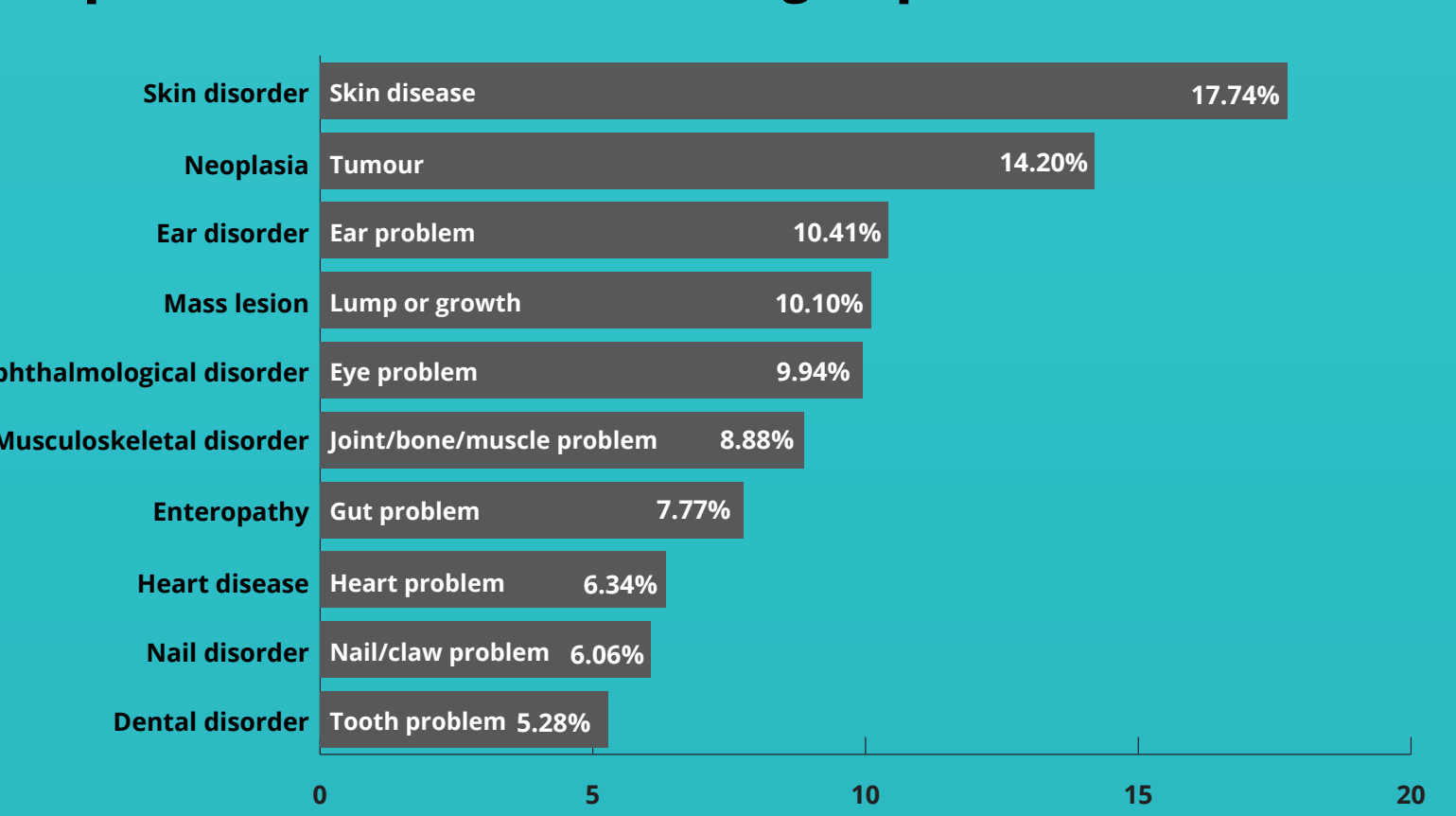


Female Boxers were more likely to be diagnosed with **periodontal disease**, **skin mass**, and **urinary incontinence** than **males**.

Male Boxers were more likely to be diagnosed with **heart murmurs**, **aggression** and **aural (ear) discharge** than **females**.

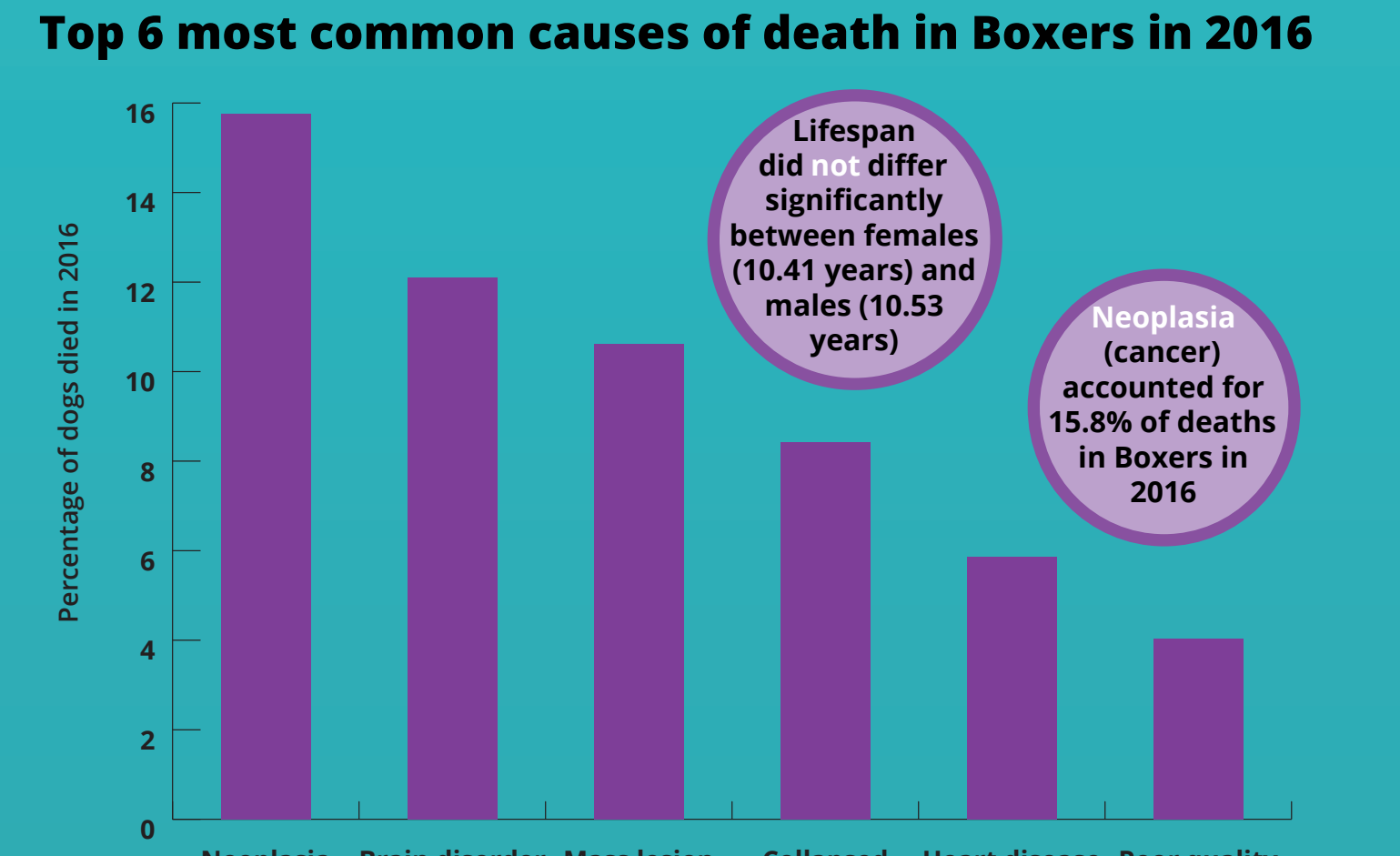
Most commonly diagnosed disorder groups

Top 10 most common disorder groups in Boxers in 2016

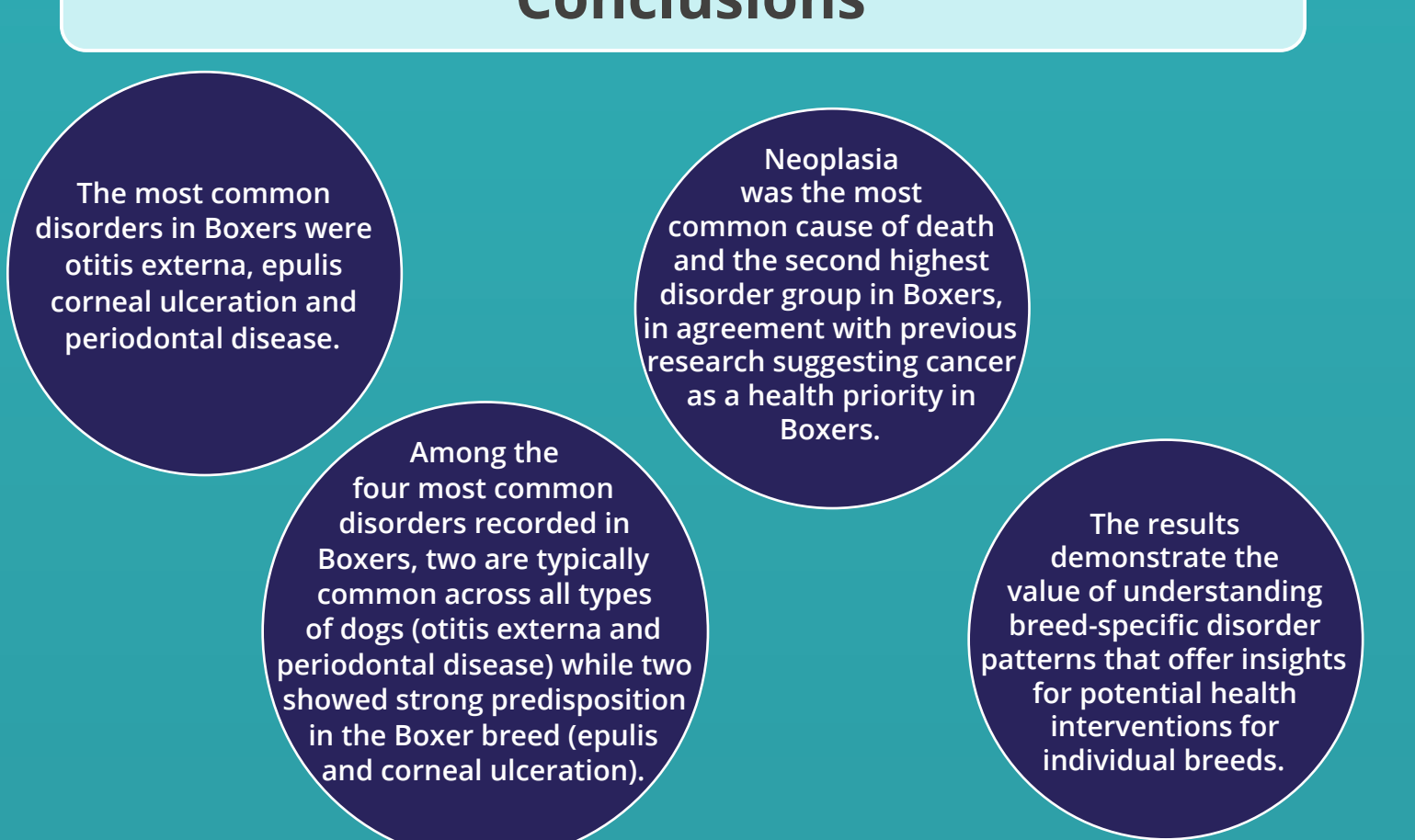


Most common causes of death

Top 6 most common causes of death in Boxers in 2016



Conclusions



[CLICK TO READ THE FULL STUDY](#)

O'Neill et al. (2023) "Demography, common disorders and mortality of Boxer dogs under primary veterinary care in the UK" Canine Medicine and Genetics DOI: 10.1186/s40575-023-00129-w

RVC VetCompass <https://www.rvc.ac.uk/vetcompass> carries out welfare research based on anonymised clinical information shared from over 30% of UK veterinary practices. We are very grateful to the owners and veterinary professionals who contribute to VetCompass research.