



UNIVERSITY
OF LONDON

2023

Postgraduate programme in
**Veterinary Epidemiology
and Public Health**

With academic
direction from:

RVC Royal
Veterinary
College
University of London

london.ac.uk/rvc

World class. Worldwide.

Join the World Class

A large, fluffy brown sheep is grazing in a green field. In the background, there is a wooden fence and some trees under a cloudy sky. The sheep is facing right, with its head down, eating from a wooden trough.

1 Study internationally relevant issues
You will gain specialist skills and global perspectives that are highly valued in the field of veterinary science.

2 Quality of learning
Academic leadership is provided by the Royal Veterinary College, which was ranked as the world's top veterinary school in the QS World University Rankings 2022.

3 Continue your professional and academic development
Help boost your career progression by enhancing your practical experience and professional knowledge.

4 Enjoy the benefits of distance and flexible learning
Study online from anywhere in the world, at your own pace, without taking time out of your career. You'll have access to learning resources that foster an engaging and motivating learning experience.

5 A trusted name in global education
The University of London is one of the oldest and most prestigious universities in the UK, and is internationally regarded as a centre of academic excellence.

Contents

Postgraduate programme in Veterinary Epidemiology and Public Health

Outstanding distance learning opportunities	4
Developed by experts	5
How you study	6
Veterinary Epidemiology and Public Health	8
Continuing Professional Development	11
A unique global community	12
Entrance requirements and further information	14

Key dates

Application deadline:

15 December

Registration deadline:

15 January

Programme starts:

February

Please note: There is no application or registration deadline for 35- and 50-hour individual modules.

Outstanding distance learning opportunities



**Dr Christine
Thurania-McKeever FHEA**

**Director of Distance Learning
Programme, Royal Veterinary College**

As Programme Director, I have overall responsibility for providing academic and administrative guidance for the programme featured in this prospectus. Providing distance learning courses through the University of London is a challenging but very rewarding role.

We have students from all over the world and our team works very hard to ensure that we offer them a programme that is of an academically high standard and relevant to the contemporary needs of livestock farming and veterinary medicine. All of our courses have been designed to be of worldwide relevance, and offer options that are suitable for people of diverse professional backgrounds.



It's a wonderfully rewarding experience to see our students successfully completing their courses and graduating.

Internationally relevant

The programme in this prospectus will be of interest to veterinarians, livestock farmers and scientists who wish to continue their professional and academic development. We expect that graduates of these programme will be able to:

- improve the health and production of livestock
- understand the interaction of livestock with people and the environment

- gain an overview of the factors that influence livestock production (including components on nutrition, reproduction, disease, welfare and the environment)
- implement control strategies by integrating this knowledge with the principles of epidemiology, economics and disease control within the context of management and infrastructure
- address the interaction between livestock and the public, in terms of zoonotic diseases and clean food production
- communicate effectively on the health of animal and human populations to a range of audiences, including the general public, farmers, politicians and other key policymakers.

Developed by experts

Gain a prestigious master's developed by experts at the Royal Veterinary College. Whether you're a veterinarian, livestock farmer or scientist, there are options to suit you. We also offer a wide range of individual modules that are available to study on a stand-alone basis and give you an idea of the topics covered on the master's programme.

A trusted name in education

The University of London is one of the world's leading universities, internationally recognised for its high academic standards. With over 150 years of experience in distance education, our flexible online programme provide world-class qualifications.

Among former students are six Nobel Prize winners, including Nelson Mandela and Charles Kao. Graduates have made, and continue to make, significant contributions worldwide.

London made global

Founded in 1836, the University of London is one of the oldest and most prestigious universities in the UK and is internationally regarded as a centre of academic excellence. In 1858, we made our programme available to study anywhere in the world.

The Royal Veterinary College

The foundation of the Veterinary College, London – now the Royal Veterinary College (RVC) – in 1791, marked the establishment of the veterinary profession in the UK. The RVC is the largest veterinary school in the country and was ranked as the world's top veterinary school in the QS World University Rankings 2022.

The College has over 2,500 students enrolled on undergraduate, postgraduate and continuing professional development programmes and four state-of-the-art teaching and referral hospitals, providing services to the public and the veterinary profession.

The College's reputation for excellence and pioneering work in teaching and research makes us stand out from the crowd, and our independent status enables us to innovate and keep at the forefront of theory and practice. Postgraduate students are taught by experts in their field and are provided with the specialist knowledge and skills required to make it to the very top of their chosen profession.



Professor Stuart Reid CBE

**BVMS PhD DVM
DipECVPF FRSB FRSE
FRCVS**

Professor Reid is President and Principal of the Royal Veterinary College. He is recognised by the Royal College of Veterinary Surgeons as a specialist in veterinary epidemiology and as an expert in veterinary public health by the European Board of Veterinary Specialisation. He is a graduate of the University of Glasgow and has led the RVC since 2011. He is a Fellow of the Royal Society of Edinburgh and was elected to the National Academy of Medicine (USA) in 2019.

Photo: Mark Thomas, Veterinary Record

How you study



Flexible study

If your job requires frequent travel or you work irregular hours, distance learning offers a means of furthering your studies without having to attend the University in person. You also avoid additional travel, accommodation and living expenses of being a full-time student in London.

How we support you

Although you are provided with all the materials you need to successfully complete your studies with a minimum of direct academic support, you do receive support in several ways:

- For each module, you can submit up to two written assignments for tutor feedback and assessment.

- RVC's Distance Learning Programme Office offers help and advice with academic matters. All non-academic matters should be directed to the University of London.
- The RVC offers guidance with digital learning and study skills support, such as academic writing and referencing.
- Access library e-resources from anywhere via OpenAthens and gain access to the publications that the RVC subscribes.

Virtual Learning Environment (VLE)

Our VLE forms an essential part of your studies.

- You will be encouraged to connect and communicate with other students on the programme via the Student Discussion Forums.
- The VLE also provides access to the RVC community, Online Library and study materials.
- Submit your course material queries and receive help from an RVC academic.
- Participate in scheduled webinars, with the opportunity for Q&As.

Computing requirements

We set minimum basic computer requirements because your study resources are available via the VLE and it is vital that you can access this regularly. For this programme, you will need regular access to a computer with an internet connection. Some modules have specific software requirements.

For more information please visit:

bit.ly/rvc-veph-thecourse

(see module outlines) and

bit.ly/computer-reqs

Study materials

The majority of study materials are offered online via the RVC Virtual Learning Environment and include:

- a Programme Handbook and Student Guide containing advice and important dates
- a Study Pack, consisting of a study guide, reader and textbooks. Depending upon the option taken, the above will be offered online via our VLE only.

Note: We are unable to provide access to personal tutors.

Period of study

MSc and Postgraduate Diploma students have between two and five years to complete the programme. Postgraduate Certificate students have between one and five years. If you successfully complete one level of award and progress in your studies, then your registration end date will remain unchanged.

Time commitment

Each module of the degree programme is estimated to take 240-300 hours to complete (study units and compulsory written assignment). You may find that some units will take you more or less time, depending on your familiarity with the subject. Additional time will be necessary for revision.

Assessment

The format and mode of assessment for this programme may change due to events or circumstances beyond our control. Students will be informed of their assessment arrangements via the VLE, once confirmed. For the latest information on examinations, please visit: london.ac.uk/exams



Nethma Yasara Gunathilaka

Sri Lanka

'We could follow the programme online, which is much easier for studies, whilst continuing with a job. I hope to obtain a PhD in future and my ultimate target is to be a lecturer. The knowledge and qualifications obtained through this programme will assist to upgrade my career in future.'

Veterinary Epidemiology and Public Health

This programme is aimed at animal health specialists, epidemiologists and public health specialists with an understanding of the conceptual basis of veterinary epidemiology and public health.

MSc degree

Seven modules
(three core, four optional).

Postgraduate Diploma

Four modules: 'Epidemiology and animal health economics' and 'Veterinary public health', plus two other modules chosen from the remaining core module and the optional modules of the MSc degree (excluding the 'Research Project').

Postgraduate Certificate

Two compulsory core modules in 'Epidemiology and animal health economics' and 'Veterinary public health'.

Please note: you must register for the compulsory core modules prior to commencing the optional modules.



Structure

Three compulsory core modules:

Epidemiology and animal health economics

Statistical methods in veterinary epidemiology*

Veterinary public health

PLUS four further optional modules selected from:

Advanced statistical methods in veterinary epidemiology*

Developing and monitoring of livestock production systems

Economics for livestock development and policy

Management of infectious disease outbreaks in animal populations*

Research design and methods


Research project in veterinary epidemiology and public health

Surveillance and investigation of animal health*

* These modules have additional computing requirements, for more information please see the individual module descriptions at:

bit.ly/rvc-veph-thecourse
(see module outlines)

Please note: for a more detailed breakdown of the structure, visit: **london.ac.uk/rvc**

A woman with red curly hair, wearing a black graduation cap and gown, stands against a grey stone wall. She is leaning her right arm on a ledge. The gown has a white stole with two black horizontal stripes. The background is a blurred stone wall.

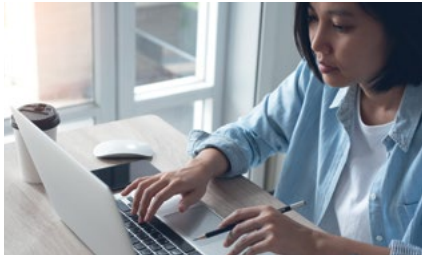
‘I wanted to study a specific programme about animal welfare, and I could only find it at the University of London. I teach animal welfare and animal health, and I’m applying everything I learned in my degree straightaway in my job. The programme is really complete and helpful – I learned a lot and I would recommend it without hesitation.’

Alizée Debieuvre
France



Left to right: Dr Christine Thuranira-McKeever, Distance of Distance Learning Programme, Priya Ragoonath, MSc Veterinary Epidemiology and Public Health graduate, and Professor Ayona Silva-Fletcher, Professor of Veterinary Education at the RVC Graduation 2022.

Continuing Professional Development



Individual modules designed for Continuing Professional Development are offered and allow you to sample a discrete learning unit.

240-hour individual modules

- These are the individual modules of the degree programme.
- These are credit-bearing modules. Upon successful completion, you may request to transfer to the degree programme.
- Application deadline: 15 December. Studies commence: February.

50-hour and 35-hour individual modules

- These non-credit bearing modules are extracts, taken from the degree programme, enable you to study a stand-alone unit without committing yourself to a full module.
- They are suitable for both non-graduates and graduates.

- There are no entrance or English language requirements.
- You may choose to be assessed and, on successful completion, you will receive a Certificate of Achievement.
- No access is offered to academics, or other students studying these modules.
- Application deadline and the commencement of studies: you may apply and study whenever you feel able. There are no set deadlines.

For more information on the 240, 50 and 35-hour individual modules see: rvc.ac.uk/study/postgraduate/individual-modules

Spatial Epidemiology individual modules

For more information on these modules visit: bit.ly/rvc-individual



Barry Robinson

240-hour Individual Modules, Australia

'I chose to enrol in the individual modules as a way to supplement a master's degree in veterinary public health undertaken at the University of Sydney. I was impressed by the individual modules offered by RVC. They were complete, self-contained, up-to-date and relevant. I have been able to apply skills acquired in spatial analysis when investigating outbreaks on prawn farms, leading to the development and implementation of control strategies on-farm.'

A unique global community

Example students by country

Australia	Northern Ireland
Bangladesh	Pakistan
Canada	Republic of Ireland
Croatia	Rwanda
Czech Republic	Spain
France	South Africa
Ghana	Sri Lanka
Hong Kong	Switzerland
India	Tanzania
Kenya	Thailand
Malawi	Uganda
Malaysia	United Arab Emirates
Mauritius	United Kingdom
Namibia	United States of America
New Zealand	Zambia
Nigeria	

Key

- Example students by country
- Testimonials from some Veterinary Epidemiology and Public Health graduates



‘As a working parent, I appreciated the flexibility of the distance learning pathway, which enabled me to complete my studies whilst maintaining my professional career and a healthy work/life balance. The course has helped in my current role in conducting endemic disease investigations and provided me with a greater understanding of the national scale response to, and management of, notifiable disease outbreaks.’

Helen Hollyfield,
United Kingdom



‘As a mixed practice veterinarian, I really liked the Research design and methods module. This module specifically details the evidence based veterinary medicine which enabled me, as a veterinary clinician, to combine the best evidence (mostly primary research), my clinical expertise and owner/animal circumstances to come up with tailored clinical decisions.’

Blaise Iraguha,
Rwanda



'Even whilst I was studying, I was able to use different analytical techniques learnt during the course to interpret data and to discuss findings with other colleagues.'

Bart Sustronck, Belgium



'I feel part of a community and I look forward to the professional networking opportunities this will provide.'

Michele Pesciaroli, Italy



'The knowledge I gained has helped me to improve my daily work performance and gain more recognition. The MSc degree from the RVC now provides me with broader job opportunities, as many government jobs at international organizations, such as the OIE and FAO, require a degree in epidemiology and/or public health.'

Yu Qiu, Thailand



'I made the right decision by enrolling in this course; it has substantially boosted my professional standing and given me greater confidence in carrying out my duties as a field veterinarian.'

Sanjeev Malviya, India



'Studies were very convenient for me, even though it was a distance learning course, I had the opportunity to fit in my studies alongside my other commitments. I was very fortunate to study an internationally recognized master's degree whilst living in Mauritius and working at the same time.'

Priya Ragoonath, Mauritius

Entrance requirements and further information

Entrance requirements

MSc degree

EITHER a Second Class honours degree (or equivalent) in a scientific subject, veterinary or animal science, agriculture, biological sciences or medicine

OR a Second Class honours degree (or equivalent) in a scientific discipline which has included suitable training.

Postgraduate Diploma/ Certificate and 240-hour individual modules

A degree, or a technical or professional qualification and work experience considered appropriate and relevant by the University.

English language requirement

With the exception of students taking 35-hour or 50-hour individual modules, all applicants must provide evidence of their English language ability. For more information on the English requirement for the programme, please visit: london.ac.uk/rvc

How to apply

For the MSc, Postgraduate Diploma, Postgraduate Certificate and 240-hour individual modules, please apply online via the programme web pages: london.ac.uk/rvc as soon as possible, but no later than 15 December.

Fees

You can choose to pay the total amount upfront, or pay as you go, for each new module you take.

Fees are subject to annual revision and typically may be increased by up to five per cent per annum. The full list of annual fees for the programme is published on the Student Fees web page; please visit: london.ac.uk/fees

Please note: The student fee shown is net of any local VAT, Goods and Services Tax (GST) or any other sales tax payable by the student in their country of residence. Where the University is required to add VAT, GST or any other sales tax at the local statutory rate, this will be added to the fees shown during the payment process. For students resident in the UK, our fees are exempt from VAT.



Pankaj Dhaka

India

‘Royal Veterinary College ranks top amongst the veterinary colleges in the world, so it’s a dream for every veterinary aspirant to study from such a highly reputed college. I am very proud to be part of this legendary University and Institute.

I have learned many new concepts throughout this programme which I am applying to my academic and research exercises. Moreover, I am still in contact with students from my cohort and have many joint academic sessions.’



The information contained in this prospectus was correct at the date of publication but may be subject to change. The University does not intend by publication or distribution of this prospectus to create any contractual or other legal relation with applicants, registered students, their advisers or any other persons. For the most up-to-date information, please visit our website.

Published by University of London.

Copyright © University of London,
September 2022.

For further information on the range of programmes we offer, please visit our website (london.ac.uk) or contact us at:

The Student Advice Centre

University of London
Senate House, Malet Street
London WC1E 7HU
United Kingdom

Telephone enquires: +44 (0)20 7862 8360

Online enquiries: sid.london.ac.uk

RVC Programme Office: dlp@rvc.ac.uk



View the
Veterinary
Science
web page

This material is available in alternative formats upon request.
Please contact: special.arrangements@london.ac.uk

Follow us on:



london.ac.uk/facebook



london.ac.uk/flickr



london.ac.uk/instagram



london.ac.uk/issuu



london.ac.uk/linkedin



london.ac.uk/twitter



london.ac.uk/youtube

london.ac.uk/rvc