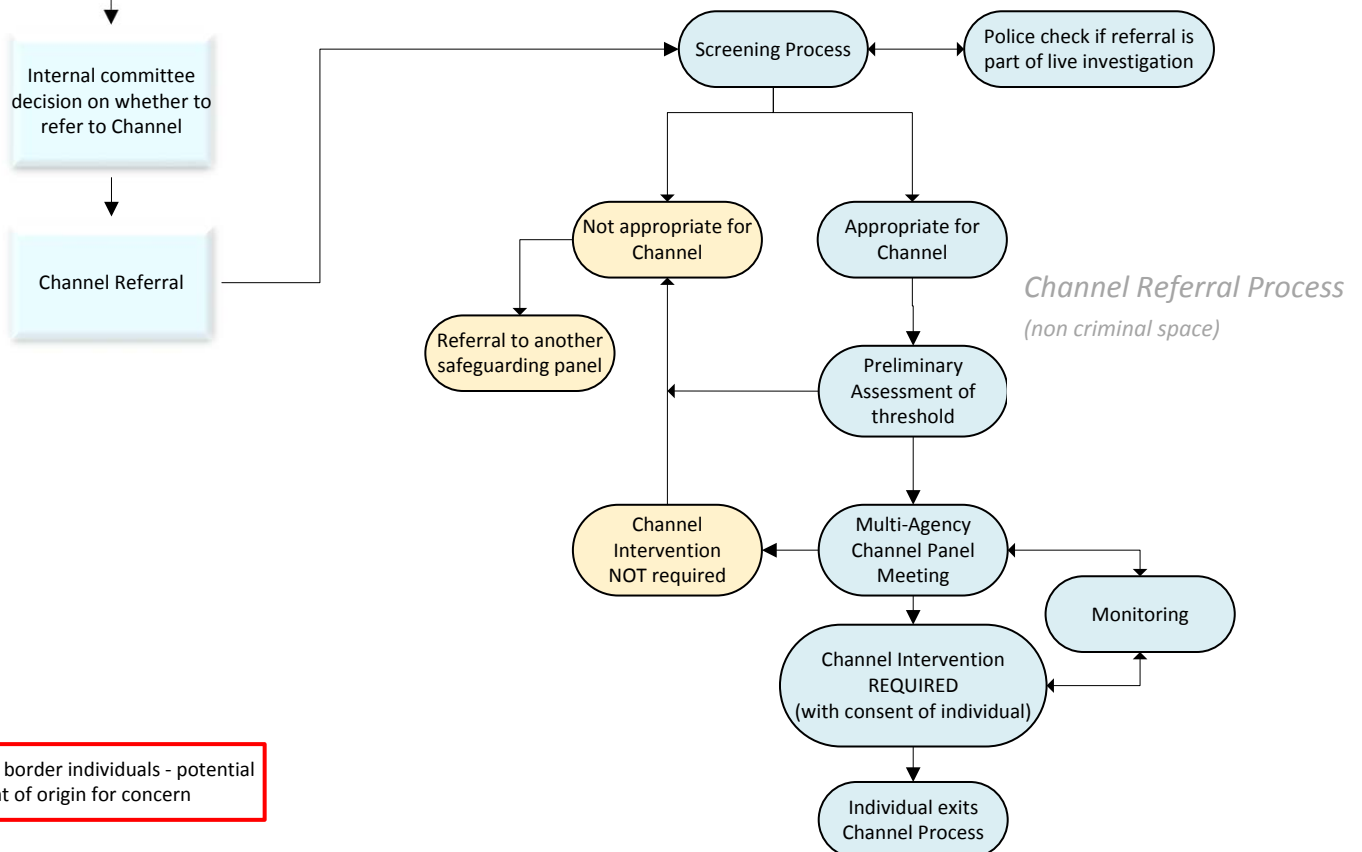
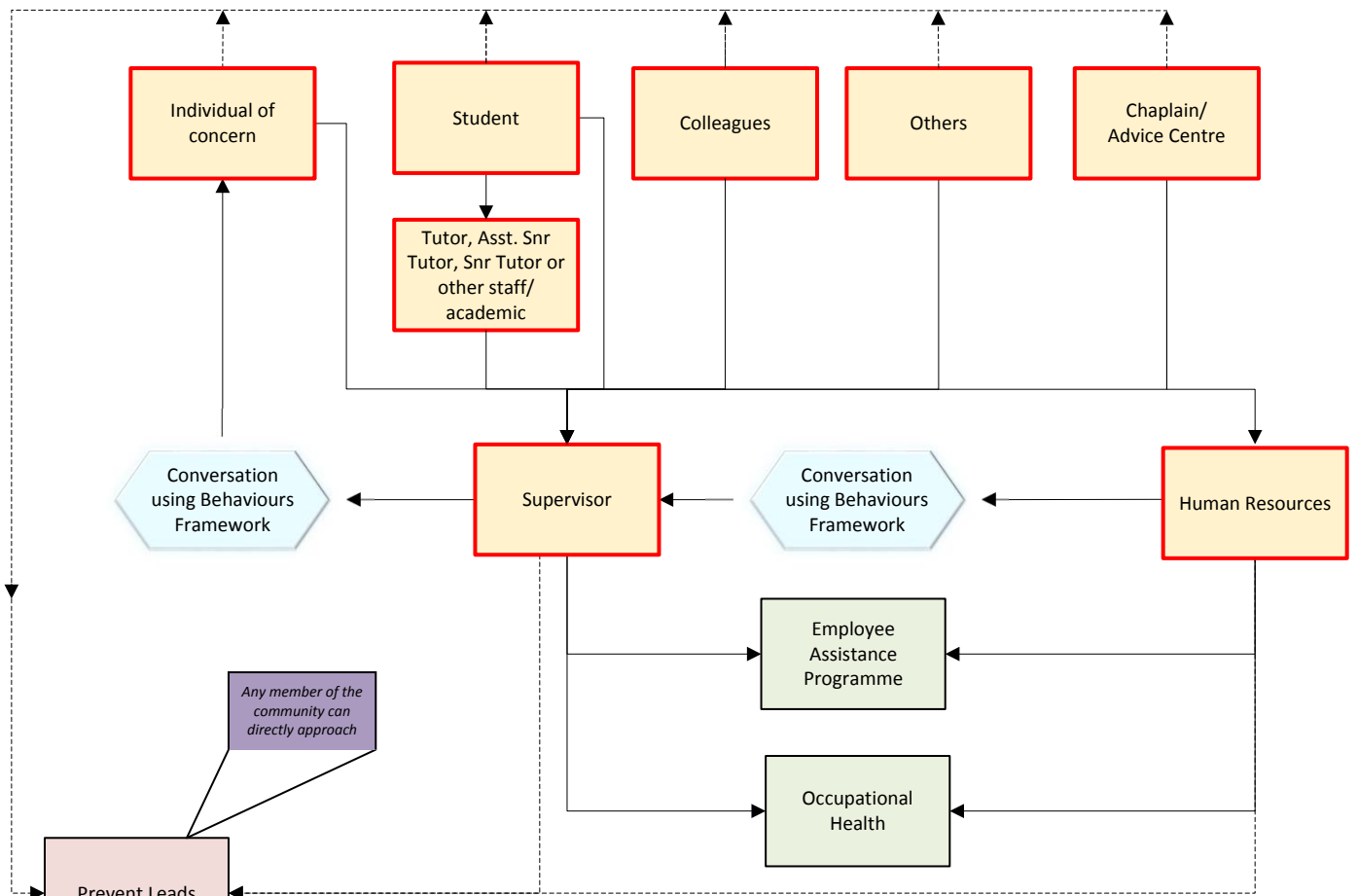


## STAFF CONCERN INFORMATION FLOW

This diagram outlines the flow of information relating to a vulnerable individual (employee). Its purpose is to show who may be involved in discussing a person's case if they should be flagged as vulnerable/ needing assistance/ causing concern. The nature of concern is not specified but due to the legislative reporting requirement for Prevent, the Prevent and Channel process are specifically noted.



RED border individuals - potential point of origin for concern