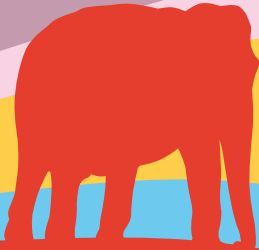


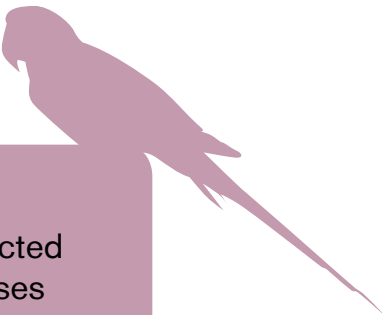
Further Information

- 70 *Finances*
- 72 *General Application Information*
- 74 *Useful Organisations*
- 75 *Important Note*
- 76 *Contacts*



Did you know?

The RVC's Learning Resources Centre houses over 30,000 volumes.



Did you know?

You can stay connected across both campuses with the RVC's extensive WiFi network.

Finances

Useful facts and figures

The RVC is currently considering its tuition fee levels and the package of financial support to be offered to students for 2012 entry. Please check the Fees and Financial support page of our website www.rvc.ac.uk/undergraduate/finances for further details.

Fees

Home/EU Students

Undergraduate course fees were set at £3,290 per year in 2010-11 for UK/EU students entitled to 'Home' fee status. It is expected that UK/EU fees for 2011-12 will be £3,375.

International Students

Fees for international students vary according to course. Fees may be paid in three instalments in September, January and April, or in full in September.

For 2011-2012 the fees are:

Veterinary Medicine (D100/D101/D102)	£19,800
BSc Biomedical Veterinary Sciences (D300)	£8,880
BSc Veterinary Nursing (D313)	£8,880
Foundation Degree Veterinary Nursing (D310)	£8,880

Please note that international fees for D100/D101/D102 are subject to an Annual Fee uplift to a maximum of 2.5% per annum.

Deposit

International students must pay a non-refundable deposit of £1,000 when they accept a place on an undergraduate degree. Further details about this will be sent if an offer is made.

Other Expenses

In addition to fees, students require sufficient funds to cover their accommodation, travel, books and other living expenses. Information about living expenses can be found on our website at www.rvc.ac.uk/undergraduate/finances.cfm. UKCISA also provide useful information on living costs and you can find this on their website at www.ukcisa.org.uk/student/living_costs.php

Financial Advice

The RVC Student Welfare and Financial Guidance Officer is also available to give advice if you need it. Please contact sbeale@rvc.ac.uk

Financial Support

For details of the various schemes of financial support available please see www.rvc.ac.uk/undergraduate/finances.cfm

Grants and Awards

There is a constantly evolving range of schemes and conditions relating to grants and other awards for prospective university undergraduate or postgraduate students. For up-to-date information about finances, including fees, bursaries, grants and awards, please visit www.rvc.ac.uk/undergraduate/finances.cfm and www.direct.gov.uk/studentfinance

Or for further reading:

Educational Grants Directory
Available from the Directory of Social Change
24 Stephenson Way
London NW1 2DP
Telephone +44 (0) 20 7391 4800
www.dsc.org.uk

The Grants Register
Published by Macmillan Reference Limited
Available in reference libraries.



Financial Assistance

Please note: this section does not apply to all students, so please check the information carefully to ensure it applies to your own situation.

Bursaries

(UK students only)

Students eligible to receive the Government Maintenance Grant are also eligible for College bursaries. Bursary amounts for eligible students vary from course to course and are calculated according to the amount of Maintenance Grant received.

For 2011-12 the maximum bursary amounts will be:

Veterinary Medicine (D100) £1,650

BSc/BVetMed Combined (D101) £1,650

BSc Bioveterinary Sciences (D300) £1,650

BSc Veterinary Nursing (D313) £1,650

Foundation Degree Veterinary Nursing (D310) £1,650

Veterinary Gateway Course (D190) £4,000

Please see our website at www.rvc.ac.uk/undergraduate/finances.cfm for information about College bursaries for 2012-13.

Army Undergraduate Bursaries

(UK students only)

A small number of bursaries are available annually to provide financial support for the clinical part of the BVetMed (not more than three years) if this is your first degree. For more information, please go to www.armyjobs.mod.uk/education

Royal Army Veterinary Corps

(UK students only)

If you wish to join the Veterinary Corps, please note that financial assistance is available in the form of an undergraduate bursary for BVetMed students in their final three years in return for a minimum of four years' service.

Applicants for bursaries are encouraged to join the University Officer Training Corps first.

For more information please go to:

www.army.mod.uk/education

Scholarships

International Scholarships

Four scholarships for international students are available; three are available for students entering the BVetMed course at a value of £19,320 each, and one will be available from September 2011 for BSc Bioveterinary Sciences students at a value of £8,880. More information about this is available at www.rvc.ac.uk/international

Financial Difficulty

If you find yourself in difficulty, you are currently eligible to apply for financial assistance from the Access to Learning Fund (UK and EU students only) or the RVC Hardship Funds (all students).

General Application Information

Non course-specific

Applying through UCAS

Applications for undergraduate degree courses based at the Royal Veterinary College must be directed through the Universities and Colleges Admissions Service (UCAS), apart from North American graduate applicants to the accelerated BVetMed course who must apply through VMCAS.

UCAS

Rosehill
New Barn Lane
Cheltenham
Gloucestershire GL52 3LZ
Telephone 0871 468 0468 (from within the UK) and +44 (0)871 468 0468 or +44 (0)330 333 0230 (from outside the UK).
www.ucas.com

For all full-time higher education courses at universities and colleges in the UK, students must apply online at www.ucas.com. If you choose to apply to more than one course, university or college you need to pay £21 when you apply. If you only apply to one course at one university or college, you pay £11.

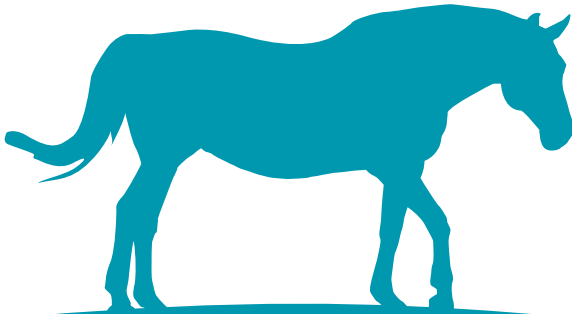
There are three types of applicant:

1 Students at a school or college registered with UCAS

All UK schools and colleges (and a small number of establishments overseas) are registered with UCAS to manage their students' applications. You will need to obtain a 'buzzword' from your tutor or careers adviser in order to register with UCAS. This establishes the organisation from which you are applying and allows your referee to attach your reference. Once you have completed your application submit it to your referee, who will send it to UCAS on your behalf. You can pay for your application online by credit or debit card, or by paying your school or other registered centre, who will then pay UCAS.

2 Independent applicants in the UK

Other UK applicants who are not at school or college should apply online independently and are responsible for paying the correct application fee, for obtaining and attaching the academic reference and for submitting the completed application online to UCAS. Your referee should know you well enough to write about you and your suitability for higher education. UCAS will not accept references from family, other relatives or friends. You will need to make your payment online using a credit or debit card.



3 International applicants outside the UK (EU and worldwide, *except North American applicants applying for the BVetMed programme who apply through VMCAS*) Individuals from the EU (excluding the UK) and worldwide should apply online independently, unless their school or college is registered with UCAS. Advice is available from British Council offices and other centres overseas, such as your school or college. You are responsible for paying the correct application fee, for obtaining and attaching the academic reference and for submitting the completed application online to UCAS. Your referee should know you well enough to write about you and your suitability for higher education. UCAS will not accept references from family, or other relatives or friends. You will need to make your payment online using a credit or debit card.

If you require further information and advice, you can contact the UCAS Customer Service Unit, open Monday to Friday, 08:30 to 18:00 (GMT) on 0871 468 0468 from within the UK or on +44 (0)871 468 0468 from outside the UK.

Deferred Entry

We consider applicants who wish to defer entry until after a gap year, but offer conditions must be met in the same academic year as the application. If you decide not to apply until the beginning of your gap year, please remember that if you are selected for interview, this may be scheduled during the period December to March.

Conditional Offers Not Met

Applicants holding offers from the RVC who fall slightly below the grades required are always reconsidered by the Admissions Committee in August and may be offered entry if places are available.

Clearing

Our BVetMed courses (D100, D101 and D102) and our Gateway programme (D190) do not go into Clearing. However, places on the BSc Bioveterinary Sciences (D300), BSc Veterinary Nursing (D313) and FdSc Veterinary Nursing (D310) may be available. Please contact the College at the earliest opportunity if you are interested in one of these courses.

Reapplication

In view of the large number and high quality of new candidates coming forward each year, we are normally unable to consider more than one repeat application. Your previous application and accompanying documents/correspondence will be attached to your new application. If the course requires the BMAT this must be retaken on reapplication. See specific course information if you are resitting any qualifications.

Visa Requirements

To find out if you need a visa to come to the UK, use the UK Border Agency interactive questionnaire at www.ukvisas.gov.uk/en/doineedvisa

The UK Government has introduced a points based immigration system for those requiring a visa. Further information can be found on the UK Border Agency website at www.bia.homeoffice.gov.uk/studyingintheuk

Advice is also available from UKCISA at www.ukcisa.org.uk/student/immigration.php

Useful Organisations

Royal College of Veterinary Surgeons

Belgravia House
62-64 Horseferry Road
London SW1P 2AF
Telephone +44 (0) 20 7222 2001
Fax +44 (0) 20 7222 2004
www.rcvs.org.uk

British Veterinary Association

7 Mansfield Street
London W1G 9NQ
Telephone +44 (0) 20 7636 6541
Fax +44 (0) 20 7908 6349
www.bva.co.uk

British Veterinary Nursing Association

82 Greenway Business Centre
Harlow Business Park
Harlow
Essex CM19 5QE
Telephone +44 (0) 1279 408644
Fax +44 (0) 1279 408645
www.bvna.org.uk

College of Animal Welfare

6 Eaton Court Road
Colmworth Business Park
Eaton Socon
St Neots
Cambs PE19 8ER
Telephone +44 (0) 844 372 9410
Fax +44 (0) 844 372 9411
Email admin@caw.ac.uk
www.caw.ac.uk

University of London

Senate House
Malet Street
London WC1E 7HU
Telephone +44 (0) 20 7862 8000
www.london.ac.uk

American Veterinary Medical Association

1931 North Meacham Road - Suite 100
Schaumburg, IL 60173-4360, USA
Telephone 800-248-2862
Fax 847-925-1329
Email avmainfo@avma.org
www.avma.org

Veterinary Medical College Application Service

(VMCAS)
1101 Vermont Ave NW
Suite 301
Washington DC 20005
USA
Telephone 877-862-2740
Email vmcas@aavma.org
www.aavmc.org

UCAS

Customer Service Unit
UCAS
PO Box 28
Cheltenham GL52 3LZ
Telephone 0871 468 0 468
Overseas telephone +44 871 486 0 468
Email enquiries@ucas.ac.uk
www.ucas.com

Important Note

All students will be required as a condition of enrolment to abide by, and to submit to, the procedures of the Royal Veterinary College's (RVC) Rules and Regulations as amended from time to time.

A copy of the current rules and regulations is available on request, from the RVC, and is available to all students at the time of enrolment.

The RVC will use all reasonable endeavours to deliver courses in accordance with the descriptions set out in this prospectus. However, the RVC does not provide education on a commercial basis. It is also very largely dependent upon charitable and public funds, which the RVC has to manage in a way which is efficient and cost-effective. In addition, the RVC continually strives to improve the content and delivery of its courses.

It therefore:

- reserves the right to suspend recruitment to a course or make variations to the contents or methods of delivery of courses if such action is reasonably considered to be necessary by the RVC
- cannot accept responsibility and expressly excludes liability for damage to or loss of students' property.

Students will need to purchase all essential equipment, including protective clothing, for their own use during the course. Students will also be expected to purchase text books, and charges are made for certain lecture notes.

As a new graduate of the BVetMed degree, before you can practise as a veterinary surgeon, you must register your BVetMed degree with the Royal College of Veterinary Surgeons (RCVS).



Contacts

www.rvc.ac.uk

+44 (0) 20 7468 5000

London Campus

Royal College Street

London NW1 0TU, UK

Telephone +44 (0) 20 7468 5000

Fax +44 (0) 20 7388 2342

Admissions Office

For all undergraduate application enquiries

Telephone +44 (0) 20 7468 5147 or

+44 (0) 20 7468 5149

Email enquiries@rvc.ac.uk

Education Liaison Office

For enquiries from schools and colleges

Telephone +44 (0) 20 7468 1257

Email schools@rvc.ac.uk

Widening Participation Office

For enquiries about the work of the Widening Participation Office

Telephone +44 (0) 20 7468 1201

Disability Officer

For enquiries concerning applicants with disabilities

Telephone +44 (0) 20 7468 1180

Email disability@rvc.ac.uk

London Campus Library

Telephone +44 (0) 20 7468 5162

Hertfordshire Campus

Hawkshead Lane

North Mymms

Herts AL9 7TA, UK

Telephone +44 (0) 1707 666333

Fax +44 (0) 1707 652090

Students' Union Society

Telephone +44 (0) 1707 666310

Email sucommunications@rvc.ac.uk

Hawkshead Campus Library

Telephone +44 (0) 1707 666457

Find us on Facebook www.facebook.com – search for *The Royal Veterinary College* and *New Faces at the RVC*.

Follow us on Twitter www.twitter.com – search for *RVC Admissions*.

The Royal Veterinary College welcomes applications from people from all backgrounds.

Our equality policy can be found at www.rvc.ac.uk/aboutus/policyandlegal/humanresources

Whilst all reasonable care has been taken in the compilation of this publication, the College can accept no liability which might arise from an unintentional inaccuracy or from such changes as may take place from time to time. Readers are recommended to verify current circumstances for themselves whenever there is a need to do so. Any enquiries relating to this prospectus or to the work of the Royal Veterinary College should be addressed to:

Admissions Office

Royal Veterinary College

Royal College Street

London NW1 0TU, UK

Telephone +44 (0) 20 7468 5147 or 5149

Email enquiries@rvc.ac.uk

The College has charitable status.