



**Royal
Veterinary
College**

University of London

Undergraduate Prospectus 2012-2013

UCAS CODES: D100 D101 D102 D190 D300 D310 D313





Undergraduate Prospectus 2012-2013

UCAS Codes: D100, D101, D102, D190, D300, D301, D310, D313

Contents

- 2 Welcome
- 4 Studying at the Royal Veterinary College
- 6 Come and Visit Us
- 8 Campus Information
- 10 International Students
- 12 Career Opportunities
- 14 Research

- 18 Student Life**
- 20 Student Life
- 24 Student Accommodation
- 28 Health and Welfare

- 30 Science**
- 32 BSc Bioveterinary Sciences
- 36 BSc Bioveterinary Sciences with a Certificate in Work-based Learning & Research
- 38 BSc Intercalated Options

- 40 Veterinary Medicine**
- 42 BVetMed
- 47 BSc/BVetMed Combined Programme
- 50 BVetMed Accelerated Programme

- 54 Gateway**
- 56 Veterinary Gateway Programme

- 58 Nursing**
- 60 BSc Veterinary Nursing
- 62 Foundation Degree in Veterinary Nursing
- 64 Top-Up Programme
- 66 BSc Veterinary Nursing – Based in Hong Kong

- 68 Further Information**
- 70 Finances
- 72 General Application Information
- 74 Useful Organisations
- 75 Important Note
- 76 Contacts

Welcome to the RVC

Stuart W. J. Reid, Principal

I am delighted to extend to you a personal welcome to life at the Royal Veterinary College. At the RVC you will enjoy an outstanding learning environment designed to equip you with all the skills essential for a career as a veterinary surgeon, bioveterinary scientist or veterinary nurse – skills that will allow you to make a significant contribution to animal health and welfare.

The veterinary field is evolving, and the Royal Veterinary College has rejuvenated its veterinary curriculum using the latest teaching innovations. You will acquire the expertise and knowledge as well as the competence and confidence to work in your chosen field anywhere in the world. Moreover, you will be exposed to the thrill of veterinary science and be equipped for a life of continuous learning and career development. Our BSc in Bioveterinary Sciences delivers the excitement of discovery in bioveterinary and biomedical research, and engenders the spirit of rigorous enquiry that is the basis for a great career in science. Our nursing degree programme builds on a caring vocation, and delivers the skills and professionalism essential to maintaining the well-being of animal patients.

Alongside the RVC's excellent academic provision, you will also be able to enjoy the many activities organised by our strong Student Union; clubs, sports teams and social events, as well as the close association with the University of London and the many opportunities it has to offer.

A degree from the Royal Veterinary College is recognised internationally as a mark of outstanding quality. It represents hard work and dedication, and will identify you as a professional with the highest standards. Not only that, but you will also be part of the larger RVC family and a member of a close community that are dedicated to promoting animal health and welfare wherever there is a need.

We look forward to helping you to your career aspirations: Welcome to the RVC.

Stuart W. J. Reid, Principal





Studying at the Royal Veterinary College



1	2	4
3	5	6

- 1 Teaching in Demonstration Theatre, Camden Campus
- 2 Nurse on placement in the operating theatre of the Queen Mother Hospital for Animals, Hawkshead Campus
- 3 Horses grazing at the Hawkshead Campus
- 4 Computer room in Learning Resource Centre, Camden Campus
- 5 Dissection lesson, Camden Campus
- 6 Anatomy teaching, Camden Campus



Come and Visit Us

If you want to visit the RVC or find out more about the College and the courses available, our Education Liaison Team provide a range of activities and events throughout the year for prospective students, parents, teachers and careers advisors.

The events available range from our annual Open Day through to visits to individual schools and colleges across the UK and around the world.

Open Days

One of the most popular ways to learn about the College is to attend one of our Open Days. We currently offer two types of Open Day; a general Open Day held in May each year for students interested in any of our undergraduate courses, and two specific Open Days run in November and February for students interested in studying the BSc Bioveterinary Sciences degree. These days are packed with a wide range of activities that allow you to visit our state-of-the-art facilities, speak to current students and academics, and gain a general insight into life at the RVC. Parents, teachers and careers advisors are also welcome to attend.

RVC on Tour

Each September the RVC hits the road and travels around the UK. The aim of this tour is to give a series of informative and interactive presentations on choices available in the bioveterinary, veterinary and nursing fields, and on the RVC itself. The Tour also provides you with an opportunity to speak one-to-one with current RVC staff, students and recent graduates. You also have the chance to undertake practical activities from our innovative Clinical Skills Centre, such as bandaging, gowning, gloving and attempting a one-handed surgical tie, and to try various scientific-related activities.

Taster Courses

Every Spring we run Taster Courses through the University of London for Year 12 students considering applying to the BVetMed, BSc Bioveterinary Sciences and our Veterinary Nursing courses. This enables you to experience life as a student at the RVC first-hand, attending lectures and participating in practical sessions designed to introduce you to the courses we offer.

Campus Tours

You can also come and visit us by attending one of our Camden Campus Tours. These tours of our London Campus are led by current students and as a general rule take place on the last Wednesday of each academic month.

UCAS Conventions

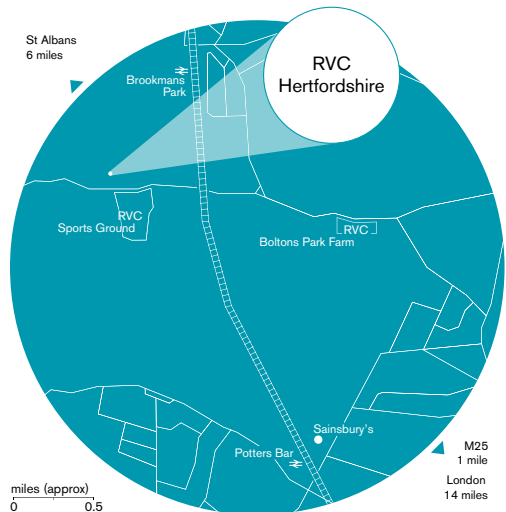
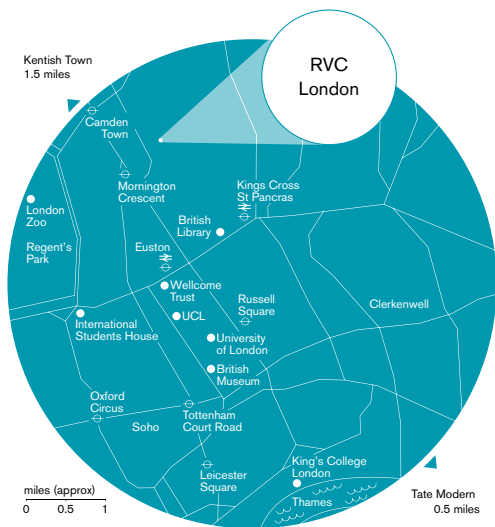
We also attend around 18 UCAS Conventions each year which run between March and July across the UK.

School and College Visits

If you are a teacher or careers advisor with students who are interested in the veterinary field, please contact us if you would like an RVC representative to attend a school, college careers or HE fair, or would like us to run a talk or session for your students.

Booking is essential if you want to attend any of the RVC organised events. For more information and to book please visit: www.rvc.ac.uk/visitus

If you would like further information about any of the opportunities to visit or find out about the RVC, please contact the Education Liaison Team. You can telephone us on +44 (0) 20 7468 1257 or email us at schools@rvc.ac.uk



For specific travel directions to both campuses, please go to www.rvc.ac.uk/aboutus



Campus Information

The RVC has two campuses, one right in the centre of London, and one out in the Hertfordshire countryside – so you experience the best of both worlds.

London Campus

The London Campus is situated in Camden, one of the most vibrant and exciting areas of the city. Famous for its markets and music venues, Camden is a fantastic place to experience student life. It is also home to Regents Park, ZSL London Zoo and the Jazz Café.

The Camden Campus itself is within walking distance from King's Cross, St Pancras and Euston train stations, and Mornington Crescent and Camden Town Underground Stations. Flanked on one side by Camden Town and the other by Bloomsbury it is highly accessible to all parts of London. This campus is where BSc Bioveterinary Sciences students spend most, if not all of their time, and where BVetMed students spend their first two years. The main campus building provides a variety of study environments, social spaces and great facilities, including teaching and research laboratories, Learning Resources Centre, library and an extensive anatomy museum & dissection room. The Camden Campus is also home to the London Bioscience and Innovation Centre (LBIC) which offers the opportunity to see what you can do with your degree post-graduation and the Beaumont Sainsbury Animals' Hospital, where some of the 4th and 5th years can be found doing their clinical rotations. The eclectic mixture of undergraduates, postgraduates and academics that populate this campus bring everything together to make studying for a degree here both enjoyable and achievable.

Camden and Bloomsbury

Camden is famous for being dazzling, flamboyant and exciting. It is unique in its atmosphere and is characterised by the ever-evolving high street, the colourful markets, the beautiful canal side and lock and a wide range of music venues. To counteract the busy Camden environment, Regent's Park and ZSL London Zoo are nearby. Or if you really need to lose

yourself in some green space, Hampstead Heath is only 15 minutes away on the bus. Bloomsbury is a charming area packed full of garden squares and renowned for nurturing students in the arts, education and medicine. It is home to the Bloomsbury Colleges (which include the RVC) and University College London (UCL). The University of London Union (ULU) building is located here and provides great facilities and events for all University of London students.

Hertfordshire Campus

The Hertfordshire Campus, known as Hawkshead, is close to Potters Bar and Hatfield, and was officially opened in 1959 by Queen Elizabeth II. BVetMed students in the clinical years and the BSc Vet Nurses spend the majority of their time at this site.

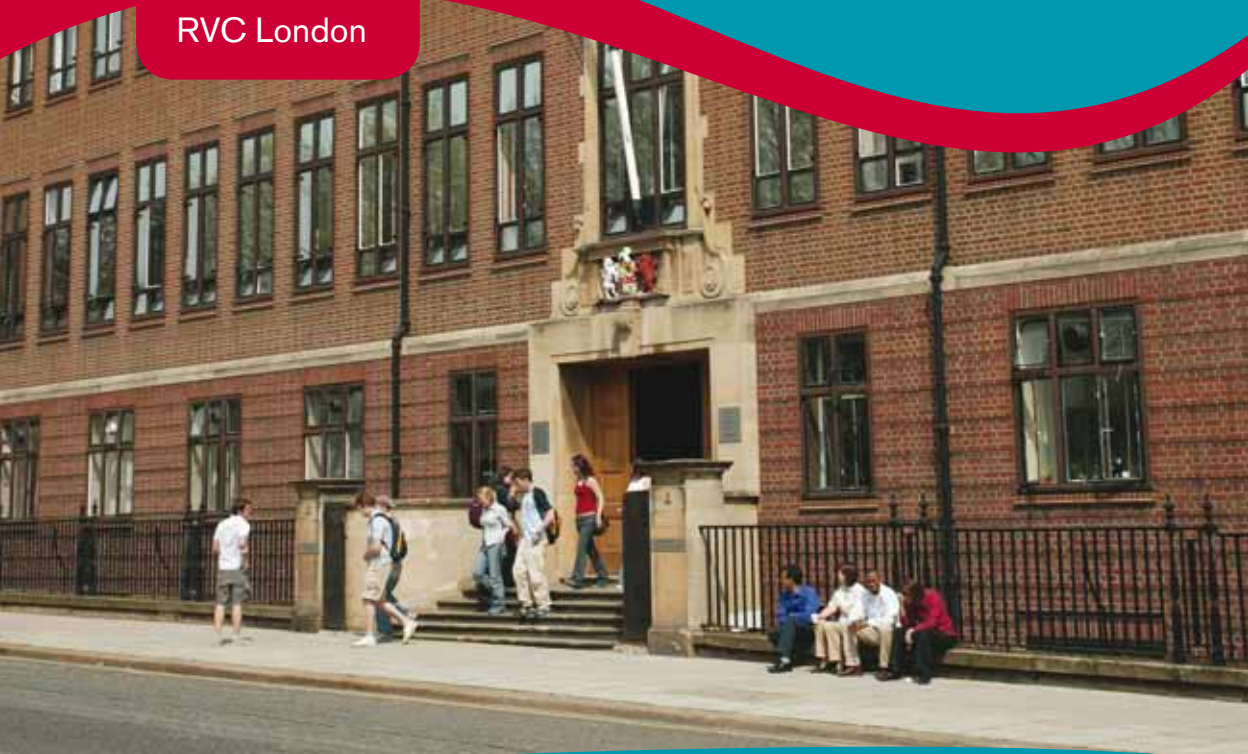
Hawkshead is a short train journey from London King's Cross Station. Student housing, a refectory, and leisure facilities mean the campus is quite self-contained. The Eclipse Building provides superb computing, teaching and library facilities. In addition to its modern journals and textbooks, the RVC has one of the best collections of old veterinary books in the world. Hawkshead also houses the most up to date lecture theatres, laboratories, a Learning Resources Centre, a Clinical Skills Centre and the LIVE Centre for Excellence in Teaching and Learning.

In terms of clinical facilities, Hawkshead is outstanding. It is home to one of the largest small animal referral hospitals in Europe, the Queen Mother Hospital for Animals and is also home to our Equine Practice, the Equine Referral Hospital, the Mill Reef Pathology Building and the Large Animal Clinical Centre. Our working farm, Bolton's Park, is just down the road. All of these fantastic clinical facilities combined provide students with an opportunity to be exposed to over 20,000 cases each year.



RVC Hertfordshire

RVC London



International Students

A home from home

The RVC has a long history of welcoming international students. Whether you are coming here from Europe, North America, or beyond, you will find a close, supportive environment. Friendly staff and students will help you adjust to your new home from the moment you arrive and will be there for you until the day you graduate.

When selecting a degree course, hundreds of questions go through your head, even more so if you're planning to study overseas. So if you're weighing up your options, here are some very good reasons to put the Royal Veterinary College at the top of your list:

HISTORY you will study at the oldest veterinary college in the English speaking world

PRESTIGE you will gain a world class education from a college of the University of London

INTERNATIONAL RECOGNITION the combination of RCVS and AVMA accreditation means that our BVetMed degree is recognised across Europe, North America, the Commonwealth and numerous other parts of the world

FORWARD-THINKING your learning will incorporate the latest teaching innovations

UNPARALLELED EXPERIENCE you will get an enormous amount of hands-on clinical experience in our research laboratories, hospitals, affiliated practices and our RVC farm

EMPLOYABILITY all of our undergraduate degree courses are designed to make you attractive to future employers by integrating academic and practical skills with problem-solving and communication skills

WELCOMING our staff will make the effort to get to know you well and will make time for you if you want to talk

CITY LIFE everything London has to offer will be on your doorstep at our Camden Campus

RURAL ENGLAND the lovely Hertfordshire countryside will become a home from home.

It's a small world

You will be one of many international members of the RVC community; many of the staff at the RVC have worked at locations across the globe, and therefore bring a wealth of international experience to the College. Our research links include collaborative work in countries such as Canada, China, the US, Bolivia, Thailand, Sri Lanka and Vietnam, to name just a few.

Adjusting to life in London

A special induction programme for international students takes place at the start of each academic year, and ongoing support will be provided by your personal and academic tutors and the student support team. This includes help and advice on adapting to UK methods of teaching, learning and assessment throughout your course.

One of the greatest cities in the world

London is culturally diverse and an extremely vibrant city to study in, and attracts international students from over 200 countries to its universities and colleges each year. Such a large international student community means you will have countless opportunities to meet and work with students from hundreds of different countries and cultures.

Get to know the RVC

Representatives from the RVC visit a number of countries each year to speak to prospective students about the College and studying in the UK; to see when we might be in your country or for more insight into being an international student at the RVC, please visit www.rvc.ac.uk/international

For further information for international students also see:

[UK Council for International Student Affairs
www.ukcisa.org.uk](http://www.ukcisa.org.uk)

[Education UK, British Council
www.educationuk.org](http://www.educationuk.org)



'I chose to study at the RVC because of its extensive facilities, especially those at the Hawkshead Campus. Receiving the AVA scholarship has been a life-changing experience, providing an excellent platform for me to interact with, and learn from, other vets. I'm honoured to be representing my country, Singapore, at the RVC and hope to do it proud.'

Boon Han Teo

BVetMed, AVA Scholarship holder

Career Opportunities

As you undertake your degree at the RVC all kinds of career options will present themselves for consideration; often the most focused undergraduate will discover a new passion which they might like to follow up. Graduates go on to pursue careers in research, teaching, business, academia, general or specialised practice, and journalism to name but a few.

Aside from earning your degree certificate, your time spent at university is also about taking time to develop yourself and recognise your strengths and weaknesses. The degree courses at the RVC teach valuable transferable and professional skills and mastering these can give you the ability to succeed in a variety of spheres.

The RVC has a dedicated Careers Adviser to offer guidance about a wide range of areas concerning students' current study, as well as their future prospects. The College also provides frequent opportunities for its students to explore businesses and institutions which might suit them post graduation. This is in addition to the courses which include agricultural and scientific industry placements, research projects and business opportunities both within and outside of the RVC. Furthermore, the staff and academics at the RVC are extremely helpful and supportive, assisting students to explore career options as they approach graduation.

For further information on career possibilities please visit www.rvc.ac.uk/undergraduate/information/AdviceSupport/GraduateCareers.cfm

The Specialist Institutions Careers Service

RVC Careers also operates in conjunction with The Careers Group, University of London's Specialist Institutions' Career Service (SICS). This provides access to one of the widest and most comprehensive ranges of careers and employability resources available to university students. SICS provides career information, lists of vacancies, advice, guidance and courses for all ages and at all stages of study.

For further information on SICS, please visit www.careers.lon.ac.uk/sics

Alumni Relations, Development Office

Your relationship with the RVC will, we hope, extend beyond your years of study here into a long and fulfilling career. We are proud of our students, graduates and staff. The role of the Development Office is to keep in touch with you as you move on. We arrange reunions and offer our alumni opportunities to take part in research, to attend professional development courses and host students seeking work placements.

RVC4Life is our website for alumni (www.rvc.ac.uk/rvc4life). It helps graduates to keep in touch with the College. It has a jobs page, discussion forums and features podcasts, archive photos and video footage. Graduates can use search facilities to keep in touch with classmates and other alumni.

Our RVC alumni are eager to help our students to make the most of their time here and achieve their professional ambitions. With their support the Development Office, through the Alumni Annual Fund, finances social and sporting activities, hardship funds and other work of the RVC. If you'd like more details, please go to the RVC4Life website.

Alumnus Association

The Alumnus Association is a self-funded, independent association of RVC graduates and staff. It helps to support students in a variety of ways, for example by funding EMS student bursaries, purchasing equipment for the Students' Union Society, purchasing books and financially supporting the undergraduate research team and other student events. For more information, please go to www.rvc.ac.uk/aboutus/alumni



Research

Always asking questions

The RVC has an excellent international reputation for ground-breaking research in both veterinary and biological science. As an RVC student, you will develop your investigative and problem-solving skills and benefit from the findings of experts in their fields.

Research at the RVC

Whatever degree you choose at the RVC, research will play an integral part. Your studies will be informed and enriched by the latest advances in knowledge and understanding of medical and veterinary treatments. You will be guided through every stage of the research process, from writing and submitting grant applications, to project management and the dissemination of results, including statistical methodology.

At the RVC, research crosses departmental boundaries and co-operation between clinicians and basic scientists is actively encouraged. Broadly speaking, we focus on two major multidisciplinary research programmes that reflect the particular expertise of our staff:

- infection and immunity
- lifestyle (encompassing the effects of diet, exercise and ageing on musculoskeletal and cardiovascular health and reproductive physiology).

We have particular expertise in developmental biology – since developmental processes are often recapitulated in tissue repair, this discipline fits well within our Lifestyle programme. We aim to translate our research into solutions for veterinary and human medicine and use our expertise and veterinary patient caseload to undertake comparative research of both biomedical and veterinary significance. We work towards solutions to control endemic and emerging infectious disease problems both in the UK and throughout the world. Understanding the flow of pathogens between wildlife, domestic livestock and people is a particular research interest.

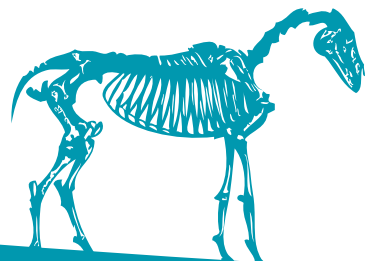
Our overall approach extends from the molecular level to the whole animal or population of animals. The disciplines that underpin our research effort across these research themes include Animal Welfare, Biomechanics, Genetics, Bioinformatics, Pathology and Epidemiology and Public Health.

Student Research at the RVC

RVC students are required to conduct individual research projects as part of their degree programmes. Depending on their year and programme of study, such projects range from those focused on animal welfare and husbandry to clinical problems, and laboratory science to business processes. Student research projects have recently included:

- An anatomical investigation of Red and Grey squirrel hindlimbs
- Deformations in the elephant's foot during loading
- Studies on the French Lungworm in dogs at Battersea Dogs Home
- Altered urothelial signalling in human Overactive Bladder patients
- Regulation of placental function in the horse
- Generation of a zebrafish model of epilepsy in man.

Your undergraduate research experiences, whatever your chosen degree, will be integral to your future employability. Consequently, at the RVC we strive to offer student research projects that contribute new knowledge within its discipline domain. Students are frequently rewarded with scientific conference presentations, at both national and international research meetings and even a contribution to a paper published in a peer-reviewed journal.



'I am entering the 2nd year of my PhD at the Veterinary Laboratory Agency (VLA) in Guildford; I'm proud to say that I have my dream job. My extensive and hands on research experience at the RVC enabled me to get my PhD position, made my current learning curve much easier, and has set me up for a successful research career – thank you RVC. Here at the VLA, RVC graduates are recognised for their exemplary laboratory skills, making them desirable PhD students!!!'

Helen Singleton graduated from the RVC in 2009 with a BSc Bioveterinary Sciences.

'Four years ago I had little idea of what I wanted to do with my life other than be involved in animal health. I enrolled on the BSc Bioveterinary Sciences course at the RVC not really sure what to expect. I spent three years learning about animal health and disease and being involved in a number of substantial undergraduate research projects. I worked on two main projects, one investigating the cause of equine laminitis, and another on better ways to diagnose feline UTIs. The research projects highlighted to me the necessity for more veterinary research. This prompted me to apply for graduate-entry Veterinary Medicine at the RVC. I am now finishing my 1st year and aspire to become a veterinarian specialising in felines when I graduate (again). Had I not had such a solid grounding in veterinary research this career path would not have been known to me or a possibility.'

Alice Fordham graduated from the RVC in 2009 with a BSc Bioveterinary Sciences.

For more information about Undergraduate research at the RVC please go to www.rvc.ac.uk/studentresearch

Research

Always asking questions

Undergraduate Research Team

If you'd like to get involved in an overseas research project, you can join our Undergraduate Research Team. Students from all disciplines come together to structure a research project that will benefit people in developing countries. Having raised expedition funds, they travel to the country in question, conduct their research and gain unforgettable, invaluable experience.

Recent projects have been completed in Zanzibar, Botswana, the West Indies and Mexico, where the team worked alongside a veterinary school in the Yucatan. They undertook a base-level study of subsistence livestock in order to investigate the parasitic and viral causes of production loss in semi-humid, deciduous jungle villages. The data collated have since been presented in the UK and in Central and South America, and there are articles pending publication.

For more information and to read the most recent URT blog go to www.rvc.ac.uk/urt

1	2
3	

- 1 RVC researchers in the Centre for Emerging, Endemic and Exotic Diseases (CEEED) laboratories
- 2 Structure and Motion research, Hawkshead Campus
- 3 MiE Equine Gantry System Gamma Camera at the Diagnostic Imaging Suite, Hawkshead Campus



Student Life

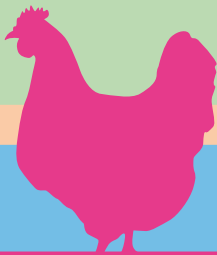
20 *Student Life*

24 *Student Accommodation*

28 *Health and Welfare*

Did you know?

Based just minutes from King's Cross and St Pancras stations, the RVC's London Campus, gives you access to the best transport links in the UK.





Did you know?

The RVC is the oldest veterinary college in the English-speaking world.

Did you know?

The Student Union at the RVC is home to many social and sports clubs and takes an active role in the social life of its students.

Student Life

Day to day student life at the RVC can involve lectures, dissections, lab practicals, animal handling, directed learning and private study; depending on your course and your year of study. This timetable is punctuated with breaks to allow students to refuel and catch up with friends, and is complemented by the active programme of seminars and events.

Student Life – Day to Day

Wednesday afternoons are kept free in timetables to allow time for sports and clubs activities and practise. If you haven't already got a sport, university provides a great opportunity to find out which ones might be for you. Whether you attend gruelling weekly practise for a sports team or just like to use the time to get some mild exercise, it is a great way to relax and take your mind off your studies for an afternoon. Some of the more popular clubs also offer evening and weekend sessions.

Student Life – Social Life!

RVC students: We work hard ... we play harder. Whether living in London or Hertfordshire, there's always something going on.

As Samuel Johnson famously said, "When a man is tired of London, he is tired of life". It is one of the most vibrant, fast-paced capital cities in the world, with plenty to see and do. Whether it's a cultural day visiting the (mainly free) museums, or a hectic day fighting the shoppers on Oxford Street, London is the place to be. Keep an eye out for student nights at the various clubs as massive discounts can be had on production of a valid student card. The RVC is part of the University of London and thus RVC students are also members of the University of London Union (ULU), which is a brilliant way to meet more people from different universities. Many of the RVC social events take place in one of the many clubs in the city; always a great way to explore more of the capital!

As for Hertfordshire ... what's not to love about the vast expanse of leafy, green, open spaces? Only 20 minutes train journey from central London but a vast change from the bright lights of the city, it is a lovely and peaceful place to live and study in. Rural activities like walking and riding are easily accessible and the beautiful city of St Albans is a mere drive (or bus

journey) away. Potters Bar has all the amenities that one would ever need, and the Hertfordshire Campus itself has a student bar (the Buttery), a lovely (and cheap) way to relax after a day of studying.

Students' Union (SU)

The Students' Union (SU) are in charge of making sure we vet students do not just slog away at the books all the time – university is a place for fun as well as work! As such, the SU is dedicated to enriching your time at the College, supporting you through every aspect of student life, from congratulations to crisis. The SU also helps you keep in touch beyond your time with us, through our work with RVC4life.

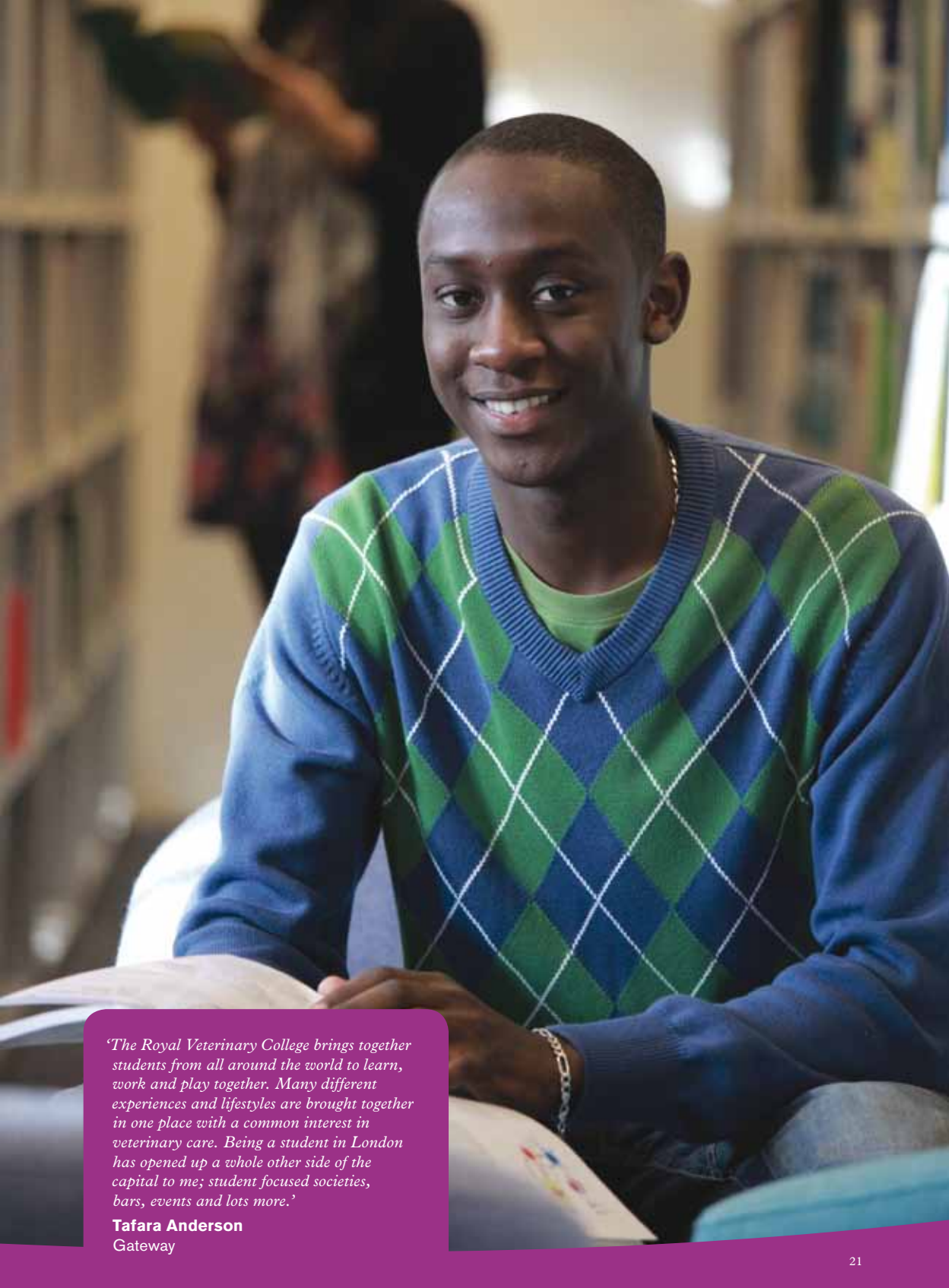
Many social events are organised every year including RAG Week, Christmas, Sports and May Balls and, of course, Freshers' Week. There is a huge array of sports clubs and societies that all are welcome to join, and they also have their own social events throughout the year. The best way to get through uni life? Get involved!

Enrichment

We offer language courses including: French, German, Japanese and Arabic. Also on offer are arts classes, the Zoological Society (affiliated with the Zoological Society of London), Choir and various clinical clubs.

Sports

From badminton to wakeboarding we probably have the most diverse range of sports of any of the small & specialist colleges in the University of London (UL) and, in our opinion, certainly the best facilities of any other veterinary school or faculty in the UK. Students from all UL colleges are welcome and actively encouraged to join us where an interest may not be catered for at their own institution.



'The Royal Veterinary College brings together students from all around the world to learn, work and play together. Many different experiences and lifestyles are brought together in one place with a common interest in veterinary care. Being a student in London has opened up a whole other side of the capital to me; student focused societies, bars, events and lots more.'

Tafara Anderson
Gateway

Student Life

Welfare

Our Welfare Officers and International Officer work closely with RVC's Student Support Services department to promote awareness of general and mental health, as well as supporting students through any unforeseen circumstances. Our efforts in this area are facilitated by the size of the RVC, as it is relatively easy to cater for individual needs and provide a personal service.

Social

Our social secretaries are dedicated to bringing you the best in RVC entertainment as well as advertising and promoting joint events with other universities and activities of all shapes and sizes across London. The Buttery, our small but mighty bar at the Hawkshead Campus, is respected throughout the UK veterinary community and is currently undergoing refurbishments to be finished in March 2011. Our impressive new bar at the Camden Campus, The Haxby, held its official opening party in December 2010.

Community

Working closely with our Widening Participation department, the SU forges links with the local communities in both Hertfordshire and Camden. A prime example of this is our recently developed Volunteering Scheme, which promotes a more positive image of students in the wider community.

Campaigns

Through a network of year representatives and executive officers, the SU also run internal and external campaigns aimed at enhancing undergraduate life and creating awareness of national and international student affairs.

Visit our website: www.rvcus.co.uk

University of London Union (ULU)

As a constituent college of the University of London, the RVC's students are entitled to free membership of ULU. The ULU building is a 20 minute walk from the RVC London Campus. ULU supplements the social, cultural and athletic activities of RVC students. This in turn helps to foster a united spirit among the scattered colleges in London by fielding a number of sports teams and providing a wide range of student services, including a fantastic gym and several bars.

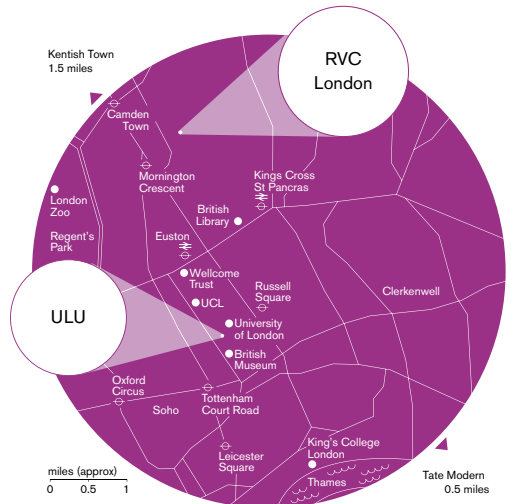
University of London Union
Malet Street

London WC1E 7HY

Telephone +44 (0) 20 7664 2000

Email general@ulu.lon.ac.uk

www.ulu.lon.ac.uk



1	2
3	

- 1 Lightwell, Camden Campus
- 2 Fitness Room, Camden Campus
- 3 Haxby Bar, Camden Campus



Student Accommodation

Where we live

Wherever you decide to live, settling into a new environment can prove challenging. It can be difficult to decide where you want to live, how far you want to commute and who you want to live with. We will help you to consider these factors carefully; it can be the difference between a stress free and a stressful year.

We aim to help all our students live cost-effectively in London or Hertfordshire, whether you choose to live in halls or private housing. When you receive an offer, details of hall accommodation, application forms and an information booklet issued by the University of London Accommodation Office (ULAO), will be sent out.

Together, we hope the following options will enable us to offer almost every first year student a room in managed accommodation, if required.

London Campus

In Camden there are two RVC halls – College Grove (which is on site) and Mary Brancker House, which is 20 minutes walk away in Kentish Town. Both are self-catered, and all students have their own en-suite room. There is 24 hour security in both halls, and living in either is a fantastic way to meet new students who are all in the same boat as you (just try not to be the person setting the fire alarm off at 3am in February whilst burning your toast!).

College Grove

This is a modern development of 83 single occupancy rooms in the form of 12 flats with up to seven rooms in each (one with disabled access). Each flat is designed as a self-contained unit and contains a large communal kitchen/dining area. All bedrooms have en-suite facilities with shower, toilet and hand basin. Free internet access is available in each bedroom.

Individual rooms are let on a self-catering basis for a minimum of 48 weeks. The rate set for College Grove for 2010-11 is £127.00 per week, including utility bills.

Mary Brancker House

The RVC has occupation rights on a UNITE Group plc managed halls of residence. Mary Brancker House is a purpose-built, self-catering student hall. It is located in Kentish Town, a short bus ride or 20 minute

walk from the College, and consists of 178 en-suite bedrooms in which broadband internet connection is available, managed and charged for by UNITE. Small groups of rooms are arranged into flats, each with a communal kitchen/dining area.

Individual rooms are let on a 50-week tenure and rates include utility bills and contents insurance. The rate set for 2010-11 is £133.00 per week plus broadband charges.

Intercollegiate Halls

As RVC students are also part of the University of London, accommodation can also be found in the various intercollegiate halls, where students have the opportunity to live with students from other University of London colleges. These halls are catered, which is brilliant for those who are more limited in their culinary skills...

Further information can be found at www.lon.ac.uk/halls

Private Accommodation

If living in halls doesn't appeal to you then you can find privately rented accommodation all over London. However, there are pros and cons to this arrangement. You are able to live by your own rules (although preferably within the landlord's!), but things can be tricky if you have problems with a challenging landlord or other tenants. Most students usually consider living in private accommodation after their first year once they know who they want to live with.

The University of London Accommodation Office (ULAO) is a great source of information about private sector accommodation. It maintains a landlord registration scheme of approximately 4500 landlords, which is updated on a daily basis. ULAO also operates a contact list for students offering or wanting accommodation, and assists with tenancy

agreement, deposit and rent queries. It supplies a Tenancy Agreement Pack for most self-contained accommodation, a Licence Pack for accommodation with a resident landlord, and lists of registered accommodation agencies, hostels and inexpensive hotels.

University of London Accommodation Office

Senate House

Malet Street

London WC1E 7HU

Telephone +44 (0) 20 7862 8880

Fax +44 (0) 20 7862 8084

Email housing@lon.ac.uk

Website www.housing.london.ac.uk

Hertfordshire Campus

At Hawkshead the RVC has three on-site options for you:

New Student Village

Brand new accommodation for 2011! The new student village offers 185 fully furnished single study bedrooms, all with individual en-suite facilities, shower, toilet and hand basin. Accommodation is arranged in a six bedroom self contained unit, set within three and four storey pavilions. Each unit will benefit from a large shared kitchen and social space. Free internet access is available in every bedroom. Individual rooms are let on a 46 week fixed term contract.

Odiham Hall

This hall comprises 30 single study bedrooms with shared bathroom and kitchen facilities. Rooms are available on a self-catering basis and students have access to a laundry and a communal television room. Free internet access is available in every bedroom. As there is a 'no fixed term contract' for Odiham Hall, short term lets are available. Rates for 2010-11 are £95.00 per week, including utility bills.

College Close

College Close is comprised of 17 self contained, independent units for up to six students sharing. Each unit is fully furnished, has ample bathroom facilities with a separate laundry and refuse area close by. Individual rooms are let on a self-catering basis for a minimum of 46 weeks. Free internet access is available in every bedroom. Rates (per person) in 2010-2011 are £95.00 per week, including utility bills.

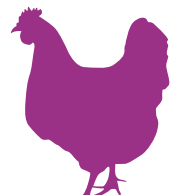
Please note that a deposit is payable in advance on all managed accommodation.

All accommodation tariffs are reviewed on an annual basis and may be subject to increase.

For additional information about RVC accommodation, please visit our website at <http://estates.rvc.ac.uk/campus-services/student-accommodation>

Private Accommodation

Some students, especially those who have already spent a couple of years in Camden, opt to live in private accommodation when they get to the Hertfordshire Campus. Based on previous years, there are many houses and flats, advertised through local letting agencies, available to rent within the Potters Bar area making it easy to find what you are looking for.



Student Accommodation



1	4	5
2	3	6

- 1 Mary Brancker House, 20 minutes walk from the Camden Campus
- 2 College Close, Hawkshead Campus
- 3 Individual room in College Grove, Camden Campus
- 4 College Grove, Camden Campus
- 5 Kitchen/Dining area, Mary Brancker House
- 6. Visualisation of New Student Village, Hawkshead Campus



Health and Welfare

Looking after our students

Whether you need support with your studies or need advice and guidance on financial or personal issues, there is always someone on hand at the RVC to help.

Support Services

A range of specialist staff are available to provide advice and support when you are applying to, or studying, at the RVC. A dedicated Teaching and Learning Support Manager; a Student Support Manager; a Disability Officer; a Finance and Welfare Officer; a Careers Adviser; Counsellors at both campuses; Housing and Careers advisors (based at the University of London), and a Chaplain offering pastoral care regardless of faith, are all on hand. And with our personal and academic tutoring system, your tutors are always available too.

Registering with a doctor

All UK, EU and International students, provided they are on a full-time course for longer than six months, are eligible for treatment by the UK National Health Service (NHS) in case of accident or ill health, although we do recommend that you arrange some personal accident insurance for added protection.

Students can refer to www.nhsdirect.nhs.uk (0845 4647) for further information about the NHS and locating medical and dental practices local to their university accommodation. To make the process easier for new students, particularly those from overseas, the RVC invites local doctors' practices to visit both campuses during Induction week to register students.

Dyslexia/dyspraxia, disabilities and long-term health conditions

The RVC is committed to ensuring that students with disabilities, learning differences such as dyslexia/dyspraxia, and long-term health conditions are fully supported at the College. Our Disability Officer is available on both campuses to discuss any access issues you have and any support you need, or to advise on:

- all aspects of studying at the RVC with a disability or health condition
- funding available for students with disabilities and/or dyslexia/dyspraxia
- the support we offer and how any adjustments might be made
- procedures such as getting extra time for exams, a new dyslexia report or extended loans for library books
- accommodation, transport and healthcare facilities in London for disabled students
- specific learning difficulties and the technologies and strategies that might be useful during your studies
- multi-sensory learning tools, such as recordings of lectures and podcasts.

Anything you tell us will be dealt with sensitively and in the strictest confidence, and nothing will be passed on without your consent.

We'd like to try and meet any access needs you have from the moment you start your course, so please let us know about them when you fill in your application form, and do so with confidence.

More information is available in the RVC Dyslexia and Disability Guide, which can be obtained from the Disability Officer (*Telephone* +44 (0) 20 7468 1180 *Email* disability@rvc.ac.uk), both the London and Hertfordshire Campus receptions, or via our Admissions Office.

Occupational Health

We offer a confidential Occupational Health Service to students who are experiencing illness affecting their ability to pursue aspects of their course, and to those whose illness is caused or exacerbated by their studies. The service operates remotely from campus. Further information about referral is available once an interview/offer has been made.

'From day one at the College we were made aware of the wide range of support services available and encouraged to make full use of them. I did just that and approached the Student Disability Officer regarding difficulties I'd experienced in the past. As a result, I have been diagnosed with dyslexia and am now confident that I can maximise my learning at the RVC with support such as extra time in exams and one-to-one tuition.'

BVetMed Student



Science

- 32 *BSc Bioveterinary Sciences*
- 36 *BSc Bioveterinary Sciences with
a Certificate in Work-based
Learning & Research*
- 38 *BSc Intercalated Options*

Did you know?

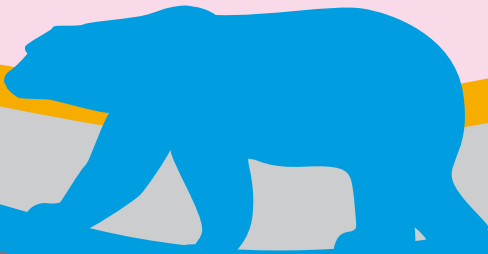
The RVC was founded in 1791, the same year as the eminent scientist, Michael Faraday was born, the great composer Mozart died and in the same year as the foundation stones were laid for the building of Washington, DC.





Did you know?

The polar bear skeleton in the anatomy museum was the basis for the CGI polar bear featured in *The Golden Compass*.



Did you know?

The Research Assessment Exercise in 2008 ranked the RVC as England's best veterinary school, amongst institutions whose research is exclusively veterinary-related.

BSc Bioveterinary Sciences

D300 | Three-year course

In recent years, advances in human medicine have had a tremendous impact on the diagnosis and treatment of disease in animals and vice versa. Today's veterinary scientists hold prominent positions in government-led laboratories, research institutes and the pharmaceutical and agricultural industries. There is also a growing need for bioveterinary scientists to play an important part in the nationwide promotion of animal health and welfare, as well as the wider sphere of human health.

Programme Content

This degree course is aimed at aspiring bioscientists who wish to study the basic biological sciences that inform clinical practice and research in both veterinary and human science. By focusing on the domesticated animals which form the bulk of veterinary work, this degree aims to give you a sophisticated understanding of their physiology, cellular and molecular biology, and the mechanisms of disease.

Year One

The first year deals with the healthy animal, and includes the following modules:

- Form and Function is an introductory course in mammalian physiology and anatomy
- Control and Regulation moves beyond organs and tissues to reveal the cellular and molecular mechanisms underpinning normal animal function
- Foundations of Science covers experimental design, scientific method, statistics and epidemiology
- Problem Definition and Investigation introduces you to problem-based learning approaches and the research laboratory environment
- Project: an extended library-based literature review of a current research topic in animal or biomedical science.

Underpinning the BSc is a tutorial programme which allows students to work in small groups with a tutor, and develop the transferable and professional skills needed to complete the main taught parts of this degree.

Year Two

The second year deals with disease and its treatment, and includes the following modules:

- The Enemy Within explains the molecular basis of challenging degenerative and proliferative conditions, including neoplasia, cancer and autoimmune diseases
- The Enemy Without covers microbiology and parasitology, the role of infection in animal disease, including the factors determining transmission and virulence, and pathological effects
- Pharmacology Principles and Practice shows how cutting-edge pharmaceuticals can be used to probe normal and diseased mechanisms, and form a basis for therapy
- From Lab to Market gives students a taste of the world of business, as well as exploring important transferable skills such as teamwork.

The tutorial programme continues to develop your skills-base and begins to look at career opportunities and work on related skills, such as interviewing.

In the final term of Year Two, you will put the learned theory into applied research by undertaking a project during a supervised laboratory placement.

Essential Information

Course type BSc Bioveterinary Sciences

UCAS Code D300

Institution Code RVET R84

Entry requirements for D300

A Level (AL) grades/subjects required BBB including Chemistry and either Maths/Physics/Biology.

AS Level grades/subjects required None.

14-19 Advanced Diploma Considered with B grades in AL Chemistry and either Biology/Maths/Physics.

GCSE At least 5 C grades including minimum grade B Double Award Science, English, Maths.

BTEC/NPTC (City & Guilds) DDM in Extended Diplomas in Applied Science and Animal Management considered with specified units required.

Access Science-based Diplomas with minimum 15 Level 3 credits in Chemistry and 15 Level 3 credits in a second science subject.

Scottish Qualifications 5 SH passes including Chemistry and either Maths, Physics, Biology. AH: BB including Chemistry and either Maths, Physics, Biology.

Cambridge Pre-U M2 or higher in Chemistry, Biology/Maths/Physics and one other Principal subject.

Welsh Baccalaureate Core accepted alongside grade B in AL Chemistry and either Biology/Maths/Physics.

The Irish Leaving Certificate BBBB at Higher Level including Chemistry and either Biology/Maths/Physics plus English Language, Maths, Physics minimum grade B at Ordinary Level if not taken at Higher level.

International Baccalaureate Grade 555 Chemistry and either Biology/Maths/Physics and one other subject at Higher Level.

BMAT Not required but applicants who wish to be considered for Merit scholarship must take the BMAT in the year of application. www.bmat.org.uk

IELTS 6.5 or above.

Pearson Test of English Overall score of at least 65.

NOTICE This panel gives basic entry requirements only – for complete entry requirement information, including specific subjects required, please go to www.rvc.ac.uk/undergraduate/bscbiovetsci/entrancereq.cfm

Year Three

In your third and final year, you progress to more specialised, in-depth study. You may choose from a variety of subjects, including: Comparative Animal Locomotion, Advanced Skeletal Pathobiology, Infection & Immunity, Advanced Reproduction & Development, Animal Behaviour & Welfare, Veterinary Pathology, Advanced Concepts in Biobusiness, Endocrine & Metabolic Syndromes, Parasitology of Tropical Human & Veterinary Disease, Practical Investigative Biology, and Prevention vs Cure. We are currently developing additional third year modules.

There is also the opportunity to study modules that are offered at King's College London if you so wish.

Need to know more?

+44 (0) 20 7468 5147

www.rvc.ac.uk

www.ucas.com

BSc Bioveterinary Sciences

D300 | Three-year course

Projects

In the final year you will also undertake a substantial research project and write a report. At the end of Years One and Two you will have completed two supervised science reports, developing sound laboratory and analytical skills alongside your theoretical knowledge. Independent project work will also be extremely valuable later on in your career, should you decide to pursue academic or industrial research.

Please see the website www.rvc.ac.uk/studentresearch for a more extensive list and more information about student research at the RVC.

Summer Vacation Placements

Funding for several supervised research laboratory placements for undergraduate students is supplied by the RVC. They run for between six and ten weeks according to the subject area. Recent first and second year summer vacation projects have investigated:

- friendly fire: the eosinophil as protector or enemy
- regulation of equine trophoblast differentiation
- the relationship between compromised blood circulation and striated muscle development
- the vitrification of bovine spermatozoa
- influence of maternal nutrition on fat deposition in the liver of offspring.

Please note: A BSc Bioveterinary Sciences degree does not make you a member of the Royal College of Veterinary Surgeons, or allow you to practice as a veterinary surgeon.

Applicants whose first language is not English must have an acceptable English Language qualification e.g. IELTS at 6.5 or above.

For more information or advice on any aspect of our entry requirements, please don't hesitate to contact the Admissions Office. You can telephone us on +44 (0) 20 7468 5147 or email us at enquiries@rvc.ac.uk

Application Information

Applications for admission to the BSc Bioveterinary Sciences should be made through UCAS during the period 1 September to 15 January for entry in the following September. It may be possible for late applications to be considered.

www.ucas.com

UCAS code D300

Institution code RVET R84

If you are made an offer you will be invited to visit the College. You will have the opportunity to discuss the course with a tutor and to meet current students.

Entry Profiles

Further information about the course and application processes can be found in the Entry Profile on the UCAS website (www.ucas.com).



'I really like the intimacy of the class size, and the familiarity we have with our lecturers – it creates a very comfortable environment to learn in. I've particularly enjoyed my research projects which give us the opportunity to put all the theory and background knowledge taught in lectures into practice, whilst getting to make scientific discoveries of our own.'

Samantha Wilkinson
BSc Bioveterinary Sciences

BSc Bioveterinary Sciences with a Certificate in Work-based Learning & Research

D301 | Four-year course

The Work-based Placement Year

This programme is our BSc Bioveterinary Sciences degree (see page 32) with the addition of a Work-based Placement Year after completion of the second year of the degree. This placement will enable you to learn on-the-job whilst spending a year working in industry, charity, a government institute or research institute. During this year you will further develop your practical skills, gain an invaluable understanding of the workplace and the biological sciences sector, and form new contacts, all of which are likely to increase your chance of securing your chosen job on graduation.

Placement information

A placement must last a minimum of 30 weeks and you will need to complete a Placement Project during the year which will form part of your assessment.

You are required to be pro-active in searching for, applying to and securing your own placement. Support and guidance will be provided in specific timetabled sessions and further advice will be available during lecturers' office hours.

Most placements are salaried and students can expect to earn between £8,000 and £15,000 during the year. A placement may lead to an offer of a position after graduation or future sponsorship for studying a PhD and you can certainly expect to extend your professional network.

In order to progress into the Placement Year students must:

- Complete Year 1 with a pass mark of at least 60%
- Complete and pass Year 2
- Have a written offer of a work-based placement from a placement provider
- Have proposed a placement project which addresses the Learning Outcomes.

Students who do not satisfy the above progression requirements can transfer into the three year BSc Bioveterinary Sciences degree provided they satisfy the normal progression requirements for the course. Such students will not be taking a placement and will be studying only for the BSc in Bioveterinary Sciences.

The initial entry requirements for the course are the same as those for the three year BSc Bioveterinary Sciences (see page 33).

For more information on the Work-based Placement Year please see www.rvc.ac.uk/undergraduate/bscbiovetsci_4year/index.cfm or contact the Admissions Team on enquiries@rvc.ac.uk.

Essential Information

Course type BSc Bioveterinary Sciences with a Certificate in Work-based Learning and Research

UCAS Code D301

Institution Code RVET R84

Entry requirements for D301

A Level (AL) grades/subjects required BBB including Chemistry and either Maths/Physics/Biology

AS Level grades/subjects required None.

14-19 Advanced Diploma Considered with B grades in AL Chemistry and either Biology/Maths/Physics.

GCSE At least 5 C grades including minimum grade B Double Award Science, English, Maths.

BTEC/NPTC (City & Guilds) DDM in Extended Diplomas in Applied Science and Animal Management considered with specified units required.

Access Science-based Diplomas with minimum 15 Level 3 credits in Chemistry and 15 Level 3 credits in a second science subject.

Scottish Qualifications 5 SH passes including Chemistry and either Maths, Physics, Biology. AH: BB including Chemistry and either Maths, Physics, Biology.

Cambridge Pre-U M2 or higher in Chemistry, Biology/Maths/Physics and one other Principal subject.

Welsh Baccalaureate Core accepted alongside grade B in AL Chemistry and either Biology/Maths/Physics.

The Irish Leaving Certificate BBBBBB at Higher Level including Chemistry and either Biology/Maths/Physics plus English Language, Maths, Physics minimum grade B at Ordinary Level if not taken at Higher level.

International Baccalaureate Grade 555 Chemistry/Biology/Maths/Physics and one other subject at Higher Level.

BMAT Not required but applicants who wish to be considered for Merit scholarship must take the BMAT in the year of application. www.bmat.org.uk

IELTS 6.5 or above.

Pearson Test of English Overall score of at least 65

NOTICE This panel gives basic entry requirements only – for complete entry requirement information, including specific subjects required, please go to www.rvc.ac.uk/undergraduate/bscbiovetsci_4year/entrancereq.cfm

Need to know more?

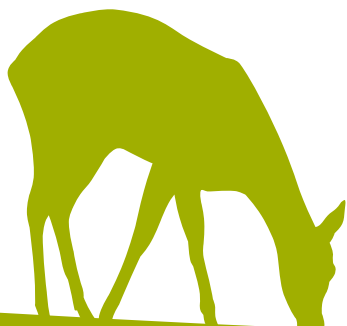
+44 (0) 20 7468 5147

www.rvc.ac.uk

www.ucas.com

‘Having completed a year-long industrial placement can vastly improve a candidate’s employability.’

The Association of the British Pharmaceutical Industry (ABPI), August 2010.



BSc Intercalated Options

Available to BVetMed D100 students only | One-year course

Many BVetMed students recognise that intercalation gives them a more rounded education and broadens their career options. Often their aim is to gain a BSc, and though they usually opt to intercalate between their second and third years, intercalation after the third year is also possible.

Students have the option to do an intercalated BSc during their BVetMed course. This is an opportunity for students to study a topic of their interest in more depth and involves an extra year of study from which they will gain a BSc. We run two intercalated courses at the RVC in Veterinary Pathology and Bioveterinary Sciences (see below for details). There are also many intercalated courses available to veterinary students in other universities.

BSc Veterinary Pathology

As the science of disease, pathology comprises all aspects of how a pathogen and a host interact and is thus central to the understanding and conduct of veterinary research and clinical medicine. This degree provides a unique opportunity for students to experience first-hand the excitement of contemporary pathology, and its far-reaching scientific relevance.

BVetMed students are eligible to compete for ten dedicated Wellcome Trust Scholarships, which include the payment of tuition fees and a £5,000 bursary. The competition and interviews for these are held in January/February of the year preceding enrolment.

Programme Content

This dedicated programme includes two compulsory taught modules (The Diseased Cell and The Diseased Animal) and a personal research project. It explores some of the most important issues in pathology today, including Foot and Mouth Disease, Bovine Spongiform Encephalopathy, Avian Influenza, Tuberculosis and Bovine Viral Diarrhoea Virus.

The taught modules combine lectures by outstanding academics from a variety of research institutions with small group seminars and practical classes, including regular necropsy examinations and pathological case conferences.

The two taught modules are structured as follows:

The Diseased Cell

Module lasts six weeks and covers:

- Differentiation of normal cells
- Gene regulation manipulation
- Molecular processes in inflammation and immunity
- Cellular markers in diseases of the immune system
- Cell cycle, cell death and repair
- Malignancy and comparative oncology in veterinary species.

The Diseased Animal

Module lasts six weeks and covers:

- Plagues – old, new and those yet to come
- Pathogenesis of persisting viruses
- Neurodegenerative diseases
- Introduction to toxicological pathology
- Wildlife diseases and zoonosis
- New technologies in (veterinary) research such as genomics, proteomics and functionomics.

Research Project

Having studied the taught modules, you have four and a half months to complete an independent project involving the design, development and execution of detailed research into a subject or species that particularly interests you.

Supervised by scientists of distinction, it may be undertaken at the RVC, the Veterinary Laboratories Agency, the Institute of Animal Health, or the laboratories of the Animal Health Trust or Cancer Research UK. Funding for your research project is provided by the College.

For further information on any aspects of the course, please visit www.rvc.ac.uk/education/undergraduate/bscvetpathology



Intercalated BSc in Bioveterinary Sciences

The fields of veterinary medicine and medicine are rich areas for biomedical research, yet the time constraints of many veterinary/medical undergraduate courses prevents the opportunity to become exposed to these areas of research. Our Intercalated BSc in Bioveterinary Sciences has been developed from the final year of our highly successful Bioveterinary Sciences degree, and features a broad range of modules to allow specialisation in several areas of bioveterinary science.

What does the course provide?

The programme aims to equip you with the following:

- A passion for biomedical research, within the context of a diverse range of species
- An appreciation of the fundamental principles of bioveterinary disciplines
- An understanding of the complexity of comparative biology.

Who should apply?

This degree is aimed at second and third-year veterinary and medicine undergraduates with a strong interest in research.

Scholarships

Potential intercalating students are currently eligible to compete for a number of Wellcome Trust Scholarships.

How to apply:

To find out more about this course and how to make an application, please visit our website at: www.rvc.ac.uk/undergraduate/BScBiovetSci_inter

How and What is Taught?

Each student needs to complete two modules, from a combination of the following:

Half modules

- Advanced Concepts in Biobusiness
- Endocrine & Metabolic Syndromes
- Parasitology of tropical human & veterinary diseases
- Practical Investigative Biology
- Wild Animal Biology

Full modules

- Advanced Reproduction & Development
- Advanced Skeletal Pathobiology
- Animal Behaviour & Welfare
- Comparative Animal Locomotion
- Prevention vs Cure

Typically, these modules attract between 10 and 20 students, which makes the learning environment considerably more personalised than is possible on veterinary or medical degree courses. Teaching is usually a mix of seminar presentations, small group learning (including directed learning), practicals and tutorials. You will be taught by an extensive range of scientists and clinicians who are knowledgeable from their own experience of animal disease and research. This means we will cover virtually every aspect of animal biology, management and disease that is likely to interest you.

The Research Project

Special emphasis is placed on the research project, which accounts for half of the intercalated degree programme. You will have a choice of over 70 different projects, from a broad range of specialisation including locomotion, reproduction, cell & molecular biology, physiology, epidemiology, infection & immunity. Several of these research projects contribute to publications every year, either as conference abstracts or as full articles in peer-reviewed journals.

Veterinary Medicine

42 *BVetMed*

47 *BSc/BVetMed Combined Programme*

50 *BVetMed Accelerated Programme*

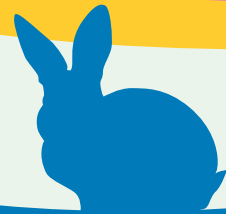
Did you know?

The first woman to hold the MRCVS diploma was Aileen Cust, who took a revision course at the RVC in 1922 after being refused to sit her final exam at another vet school.





Did you know?
The RVC is the UK's largest and only independent Veterinary School.



Did you know?
The words "Venienti occurrite morbo" on the RVC crest were written by a Roman poet called Persius and translate roughly to "confront disease at its onset".

This exciting curriculum is inspired by education research findings from the RVC's LIVE Centre. We have taken a fresh look at how we can bring together technological change, clinical and scientific progress and stimulating teaching and learning methods. The result is a truly unique veterinary degree.

You will gain a thorough understanding of the science underpinning veterinary practice and develop vital problem-solving, communication and team-working skills. In the busy RVC hospitals, you will gain the broadest possible practical experience, and during your elective studies you will get all the help you need to delve into specialist subjects and complete a rewarding research project.

Programme Content

We provide an innovative curriculum that meets all the requirements laid down by the Royal College of Veterinary Surgeons, the American Veterinary Medical Association, and the Veterinary Directives of the European Union.

This comprehensive programme will help you acquire:

- an understanding of the basic biological principles of normal body function and disease
- the ability to distinguish the pathological from the normal
- the ability to prevent disease and safely manage the processes of animal production
- the expertise to diagnose and treat disease and alleviate suffering
- the professional skills you need to work and communicate effectively with your colleagues and the public.

Basic Science

Your first two years will be spent mainly at our London Campus, with visits to Hertfordshire for lectures and practicals in animal health and handling. You will study the healthy animal in its normal environment and acquire basic skills in handling and examining horses, farm animals and companion animals. The basic veterinary sciences are taught in an integrated manner on a body systems basis, with the clinical relevance of the sciences highlighted at every stage.

Learning takes place in a variety of formats, including lectures, tutorials (some of which involve a live animal), directed learning sessions, dissections and practical classes in the laboratory and at our working farm. Our innovative curriculum means you will spend less time in the classroom and more time mastering the material you need to learn. In the course there is a strong emphasis on independent learning; from an early stage you will be expected to take responsibility for identifying your own learning needs and to participate fully in self-directed learning activities.

You will be able to monitor your own progress by taking a computer-based 'quiz' at the end of each week, so you can assess how well you are doing and focus your studies more effectively. In some teaching sessions you will also have the opportunity to use the handheld voting systems in our lecture theatres, an enjoyable and effective way to test your own knowledge.

Animal Husbandry Extra Mural Studies

You will undertake a minimum of 12 weeks Animal Husbandry Extra Mural Studies (AHEMS) during your first two years, giving you an opportunity to obtain real-life experience in a variety of settings such as dairy and sheep farms, stables, kennels and catteries. The first year's work includes three weeks lambing during your Easter vacation. At some stage during Years One and Two you must spend two weeks at a dairy cattle farm, two weeks at a pig farm and two weeks working with horses. Four weeks may be spent working with a species of your choice. You may spend up to six weeks on overseas AHEMS. You will also gather data for your first small research project at one of these establishments.



'I really appreciate the enthusiasm of the lecturers and the hands-on approach to learning – whatever you're studying you know that you will always be taught the latest scientific developments by lecturers who have a true passion for their subject; a passion that all students inevitably begin to share.'

Alice Brockman
BVetMed

Essential Information

Course type BVetMed
UCAS Code D100
Institution Code RVET R84

Entry requirements for D100

A Level (AL) grades/subjects required AAA/AAB with grade A in Biology and Chemistry.

AS Level grades/subjects required None.

14-19 Advanced Diploma Considered with A Level Biology and Chemistry at grades AA.

GCSE At least 5 A grades including grade AA Double Award Science or Biology and Chemistry if taken separately, and minimum grade B English, Maths and Physics.

BTEC/NPTC (City & Guilds) DDD in Extended Diplomas in Animal Management and Applied Science considered with specified units at Distinction.

Access Science based Diplomas with a minimum of 15 Level 3 credits in Biology and 15 Level 3 credits in Chemistry.

Scottish Qualifications SH: AAAAB including Biology and Chemistry. AH: AA-AB including Biology and Chemistry.

Cambridge Pre-U D3 or higher in Biology, Chemistry and one other Principal subject.

Welsh Baccalaureate Core accepted alongside A Level Biology and Chemistry at grade AA.

The Irish Leaving Certificate AAAABB at Higher Level including Biology and Chemistry at grade AA.

International Baccalaureate Grade 766 Biology, Chemistry and one other subject.

Advanced Placements 4 full-year AP examinations at grade 5/4 including Biology and Chemistry at grade 5.

Canadian Secondary School Diploma Overall average of 90% with 90% in Biology and Chemistry (all at advanced level).

Work Experience Minimum four weeks experience – two weeks in veterinary practice and two weeks in different animal environments.

BMAT All applicants (except non-EU International students) for D100 must take the BMAT in the year of application. www.bmat.org.uk

IELTS 6.5 or above.

Pearson Test of English Overall score of at least 65.

NOTICE This panel gives basic entry requirements only – for complete entry requirement information, including specific subjects required, please go to www.rvc.ac.uk/undergraduate/bvetmed/entryreqs.cfm

Need to know more?

+44 (0) 20 7468 5147
www.rvc.ac.uk
www.ucas.com

Clinical Science

The third year and first part of the fourth year are spent at the Hertfordshire Campus. This phase provides the framework of knowledge and basic practical skills in clinical science necessary for you to participate fully in clinical practice at the RVC and in private veterinary practice. Detailed consideration of specific diseases is based on integrated teaching of individual body systems, building on the material learnt during the first two years. You will attend lectures, directed learning sessions and practical classes. These provide you with the opportunity to gain basic knowledge and skills relating to the pathology, diagnosis, prognosis, and medical and surgical management of disease. The emphasis on self-directed study and group work also continues through this part of the course.

Clinical Skills

During the third and fourth years you will spend increasing amounts of time in our state-of-the-art Clinical Skills Centre, practising a wide range of skills in a 'safe' setting under expert guidance that will stand you in good stead when you start your clinical placements.

Clinical Extra Mural Studies

In Year Three you will begin Clinical Extra Mural Studies (EMS); to progress to Year Four, you will need to have spent 10 weeks at a variety of veterinary practices. In total, you must complete 26 weeks of Clinical EMS within the final three-years of the BVetMed. You do this via a balanced programme of placements at general veterinary practices, specialist veterinary centres, the State Veterinary Service, research institutes and the Veterinary Laboratory Agency (VLA).

Up to six of your 26 weeks of Clinical EMS may be spent outside the UK.

Intra Mural Rotations

From the middle of Year Four, much of your remaining time will be spent gaining hands-on experience in RVC clinics (Intra Mural Rotations; IMR). IMR includes the following areas:

- Small animal medicine, surgery and emergency and critical care, based in the Queen Mother Hospital for Animals, the Beaumont Sainsbury Animals' Hospital and other major hospitals in the London area –
- Equine medicine and surgery, based in the Equine Referral Hospital and our equine practice

- Farm animal medicine and surgery, reproduction and herd health investigation undertaken on our farm, in our farm animal practice and our Welsh Regional Veterinary Centre
- Pathology, including training in our diagnostic laboratories and veterinary surveillance centre.

Research Project

During this period, you will also spend at least eight weeks devising and executing a research project on an aspect of veterinary science that interests you. This is the second project of your own which you will complete. Self-motivation is key here, but a supervisor will be assigned to provide help and support as you need it. You may, during your time at the RVC, or soon after, present this project at a scientific meeting, or publish it in a veterinary or scientific journal. This distinguishes a number of our graduates from those from other veterinary schools. For further information please go to www.rvc.ac.uk/studentresearch

Specialisation

All UK veterinary graduates are required to have basic competence in all the species most commonly encountered in veterinary practice. However, the College also recognises that most students have a particular preference, whether it be for horses, domestic pets, farm animals or some other aspect of veterinary work. We have therefore created more opportunities for students to gain further knowledge and experience with their preferred species, both through additional time in more advanced classes, and through supplementary clinical rotations. You may also have the opportunity for more advanced study of disciplines and topics that particularly interest you, such as work with exotic species, anaesthesia, reproduction, veterinary history or veterinary business and entrepreneurship.

Examinations

The BVetMed is very demanding and there are rigorous examinations throughout the five-year degree. Like the other veterinary programmes in this country, and many medical programmes, there is an opportunity to retake each examination. However, a student who fails an examination twice is usually required to withdraw from the College.

Expectations

Some students enter clinical veterinary programmes with unrealistic expectations about the breadth of knowledge and skills they will be able to acquire during a five-year degree. You can only expect to

acquire basic competence in treating a limited number of common species prior to graduation, although there is some scope for specialisation during the undergraduate course. The solid basic knowledge the BVetMed provides will enable you to continue learning throughout your professional career.

Further Study at the RVC

Once they have attained the BVetMed, graduates can continue to learn at the RVC in a variety of ways. The RVC has a wide range of continuing professional development short courses and Masters programmes such as the MSc Wild Animal Health, MVetMed, MSc Veterinary Epidemiology, MSc Control of Infectious Diseases in Animals, through our Clinical Training Scholar programme, our professional doctorate, the DVetMed, and study for a PhD.

Putting your Degree into Practice

You will be entitled to practice as a veterinarian as soon as you have earned your BVetMed degree and registered as a Member of the Royal College of Veterinary Surgeons.

The American Veterinary Medical Association (AVMA) will recognise your degree as equivalent to those awarded by veterinary colleges in the United States. The RVC is the only English veterinary school accredited by the AVMA, and this gives you a unique advantage. Some of the USA's major veterinary employers recruit actively among our final year students, many of whom now sit the North American Veterinary Licensing Examination with the intention of working in the USA after qualifying.

NB Licensing requirements may vary considerably between individual US States and are liable to change. Some States may lay down specific requirements that non-US nationals cannot satisfy, and you should therefore check an individual State's licensing laws before assuming you will be able to practice there.

International Students

Applicants from overseas must meet the entry requirements by means of the qualifications listed or other acceptable alternative qualifications. Prospective students must have achieved a sufficient level of knowledge in the prescribed subjects before entry to the course. No foundation module in basic science is given within the BVetMed course. Applicants with qualifications not listed will be considered on a case-by-case basis and should contact the Admissions Office for advice.

A good working knowledge of scientific English is essential in order to follow the course, which includes a significant proportion of oral instruction and written

assessments. Applicants whose first language is not English must have an acceptable English Language qualification e.g. IELTS at 6.5 or above.

North America

Applicants from the United States of America should have at least four full-year Advanced Placement examinations at grade 5/4 including Biology and Chemistry both at grade 5.

Applicants from Canada should have 90% overall in their Secondary School Diploma with 90% in Biology and Chemistry (Advanced Level).

Applicants from North America who are in their final year or have recently graduated from degree courses which include large biological science components can be considered for our four year accelerated programme (see page 50 for further information).

Normally a GPA of at least 3.4 is required.

Applications from North American graduates must be made through VMCAS. Please see www.rvc.ac.uk/undergraduate/international/country/northamerica. cfm for more information. All other North American applicants must apply through UCAS (see www.ucas.com for further information on how to apply).

Work Experience

Before making an application, in order to develop animal handling skills you must obtain varied work experience for a minimum of four weeks (two weeks veterinary practice and two weeks in different animal environments). Examples of suitable experience other than in veterinary practice include work in stables, kennels, on a rural or city farm, in an abattoir, in a research laboratory, an animal groomers or a pet shop. This experience must be gained before making an application. Brief details of experience and duration (including dates) of visits should be set out in your UCAS personal statement.

Biomedical Admissions Test (BMAT)

The BMAT has been used for several years by Cambridge and the RVC (as well as medical schools in Cambridge, Oxford, UCL and Imperial College) as a supplementary science aptitude test to help inform the selection process. The BMAT is designed to test the data handling and reasoning skills of candidates, and the ability to structure thoughts in extended writing exercises. Due to the very high volume of excellent applications from Home/EU students BMAT scores are used as the final 'filter' of the selection process to decide who is called for interview/offered a place.

All applicants for D100 (except non-EU international students) need to take the BMAT in the year of application.

BVetMed

D100 | Five-year course (six years with intercalation, see page 38)

To confirm deadlines and examination dates and for more details please go to www.bmat.org.uk

The closing date for entries is usually at the end of September but please check online for exact dates.

Reapplication

We are normally unable to consider more than one repeat application. Applicants reapplying must take BMAT again.

Graduate Entry (Four-Year Programme)

Applicants who have recently graduated or expect to complete a biological sciences related degree in the current academic year can be considered under the graduate entry scheme. Please see page 50.

It is not possible to transfer to the BVetMed course from a degree programme partly completed at another university. Applications will not be considered from students currently on a degree programme unless they are in their final year and applying for graduate entry. No exemption is granted from any course components.

Application Information

If you are considering a veterinary career, you should take steps to learn something about the profession and take an interest in current issues affecting agriculture and the animal world in general.

Applications for admission to the BVetMed degree course (the five-year pathway) should be made through UCAS during the period 1 September to 15 October for entry in the following year see www.ucas.com

UCAS code D100

Institution code RVET R84

Important Note

You may list a total of five courses on the UCAS application form, but only four can be for veterinary medicine/science courses (D100, D101 and D102). Applicants should choose whether to apply for either D100 or D101. You may not apply for both. See page 47 for full details of the D101 degree.

Interviews

The RVC does not normally offer a place on the BVetMed course without interview. Interviews for selected applicants usually take place during the period February to March although some may take place in December. Interviews are also held in North America, normally between January and March. If you are selected for interview for more than one degree-programme at the RVC, a separate interview may be held for each course. If you are resident outside the EU your interview may take place at a different time in the year or may take a different format; please check with the Admissions Office. Interviews are conducted by a panel of at least two people; including members of RVC academic staff and, sometimes, a practising veterinary surgeon.

The aim of the interview is to find out more about you; we try to make this a useful experience rather than an intimidating one. You may be asked questions about your scientific knowledge and experience, personal interests, your ambitions, what you have learned from your work experience, and about any current, scientific, farming or other animal-related issues.

You will be asked to fill in some questionnaires before you come for interview to confirm details of Section 8 of the UCAS form and to obtain more details of your work experience.

Reference letters are not required, but if you have any and wish to bring them to an interview, you should bring copies that we can keep and add to your application. Please note that if you bring case books to your interview, the selectors may be able to browse through the contents if there is time but please do not send them to the College in advance.

Notification of Outcome

You will be informed of the outcome of your application through UCAS. Please check the UCAS website for updates. We will make every effort to reach a decision as quickly as possible, but need to ensure careful consideration of each application. If you are invited to attend an interview it is unlikely that you will receive a final decision on your application until mid-March when all interviews have taken place.

Entry Profiles

Further information about the course and application processes can be found in the Entry Profile on the UCAS website www.ucas.com



BSc/BVetMed Combined Programme

D101 | Six-year course

Quite often, veterinary students choose to complete a science degree alongside their clinical degree. For some, this stems from an interest in science developed at school. Some like to keep their options open should a scientific or research career seem preferable at a later date. Others want to reinforce the basic science foundation upon which they can build a career in veterinary medicine.

London, with its many colleges, museums and learned societies, is the richest science resource in the UK. It is also the place where much of the UK's academic research takes place. By attending specially designed science modules at the RVC, lectures and seminars outside the College, and participating in an exciting research project of your own, you will reap the benefits.

Programme Content

The BSc/BVetMed programme expands your study of basic sciences over a three-year period, allowing more time to attend internal and external science seminars and events.

It still covers animal health and disease, but tackles it from a different research-based perspective, which will enrich your understanding of clinical science in later years. You will find where others 'know', you 'understand'. This programme includes more laboratory practical classes and weekly tutorials in groups of three or four people. In order to facilitate this, in the first two years, you will study alongside students taking the BSc Bioveterinary Sciences degree, developing your skills and knowledge in the biomedical sciences.

Year One Modules

- Form and Function – including anatomy, physiology and biochemistry
- Control and Regulation – including cellular and molecular biology
- Foundations of Science – including scientific philosophy and methodology
- Problem Definition and Investigation – including research topics and a Library Project.

Year Two Modules

- Foundations of Science
- The Enemy Within – autoimmune disease, oncology and ageing, genetic diseases

- The Enemy Without – infectious diseases and injuries
- Pharmacology – how medicines are developed and tested
- Animal Husbandry – theory and placements regarding animal production, welfare and handling
- Mini laboratory project.

Year Three

You will be joined by appropriately qualified graduate entrants on a four-year accelerated BVetMed programme and your modules will include:

- Integrated Structure and Function
- Veterinary Pathology and Immunology.

You will also study one optional science module of your choice and complete a major project for your BSc degree. Many of these are published in peer-reviewed journals, adding an extra dimension to your experience (and CV).

After the BSc project year (and your first graduation ceremony), you enter phase two of the five-year BVetMed degree for the final three years of that programme. Please see the BVetMed section (page 42) for further information on this course. An increasing number of Combined Degree students are, however, intercalating before continuing onto their clinical training (e.g. undertaking a PhD).

Work Experience

We ask for prior work experience, both in veterinary practice and with animals, in order to develop animal handling skills and obtain an insight into the work of veterinary surgeons. The minimum work experience required is two weeks in veterinary practice, one week in a different animal environment and one week in a scientific environment, e.g. a research laboratory in a university, in industry, in a government research institute, or a veterinary or medical diagnostic laboratory.



This experience must be gained before making an application. Brief details of experience and duration of visits (including dates) should be set out on your UCAS personal statement.

Biomedical Admissions Test (BMAT)

The BMAT is a supplementary science aptitude test to help inform the selection process and is used by a select number of universities and veterinary schools. The BMAT is designed to test the data handling and reasoning skills of candidates, and the ability to structure thoughts in extended writing exercises. Due to the very high volume of excellent applications from Home/EU students BMAT scores are used as the final 'filter' of the selection process to decide who is called for interview/offered a place.

All applicants for D101 (except non-EU international students) need to take the BMAT in the year of application.

To confirm deadlines and examination dates and for more details please go to www.bmat.org.uk. The closing date for entries is usually at the end of September but please check online for clarification.

Reapplication

We are normally unable to consider more than one repeat application. Applicants reapplying must take BMAT again.

Application Information

If you are considering a veterinary career, you should take steps to learn something about the profession and take an interest in current issues affecting agriculture and the animal world in general.

Applications for admission to the combined BVetMed degree course (the six-year pathway) should be made through UCAS during the period 1 September to 15 October for entry in the following year.

www.ucas.com

UCAS code D101

Institution code RVET R84

Important Note

You may list a total of five courses on the UCAS application form, but only four can be for veterinary medicine/science courses (D100, D101 and D102).

Applicants should choose whether to apply for either D100 or D101. You may not apply for both.

Interviews

The RVC does not normally offer a place on the BSc/BVetMed Combined Programme without interview. Interviews for selected applicants usually take place during the period February to March although some may take place in December. Interviews are also held in North America, between January and March. If you are selected for interview for more than one degree programme at the RVC, a separate interview may be held for each course. If you are resident outside the EU your interview may take place at a different time in the year or may take a different format. Please check with the Admissions Office.

Interviews are conducted by a panel of at least two people; including members of RVC academic staff and, sometimes, a practising veterinary surgeon.

The aim of the interview is to find out more about you; we try to make this a useful experience rather than an intimidating one. You may be asked questions about your scientific knowledge and experience, personal interests, your ambitions, what you have learned from

Essential Information

Course type BSc/BVetMed Combined Programme
UCAS Code D101 **Institution Code** RVET R84

Entry requirements for D101

A Level (AL) grades/subjects required AAA/AAB with grade A in Biology and Chemistry.

AS Level grades/subjects required None.

14-19 Advanced Diploma Considered with AL Biology and Chemistry at grades AA.

GCSE At least 5 A grades including grade AA Double Award Science or Biology and Chemistry if taken separately, and minimum grade B English, Maths and Physics.

BTEC/NPTC (City & Guilds) DDD in BTEC National Diploma in Animal Management considered with specified units at Distinction.

BTEC/NPTC (City & Guilds) DDD in BTEC National Diploma in Applied Science considered with specified units at Distinction.

Access Science-based Diplomas with a minimum of 15 Level 3 credits in Biology and 15 Level 3 credits in Chemistry.

Scottish Qualifications SH: AAAAB including Biology and Chemistry. AH: AA-AB including Biology and Chemistry with Intermediate 2 or Standard Credit 1 or 2 in English, Maths and Physics.

Cambridge Pre-U D3 or higher in Biology, Chemistry and one other Principal subject.

Welsh Baccalaureate Core accepted alongside AL Biology and Chemistry at grade A.

The Irish Leaving Certificate AAAABB at Higher Level including Biology and Chemistry at grade A.

International Baccalaureate Grade 766 Biology, Chemistry and one other subject at Higher Level.

Advanced Placements 4 full-year AP examinations at grade 5/4 including Biology and Chemistry at grade 5.

Canadian Secondary School Diploma Overall average of 90% with 90% in Biology and Chemistry (all at advanced level).

Work Experience Minimum four weeks experience – two weeks in veterinary practice, one week in a different animal environment plus one week in a scientific research environment.

BMAT All applicants (except non-EU international students) for D101 must take the BMAT in the year of application. www.bmat.org.uk.

IELTS 6.5 or above.

Pearson Test of English Overall score of at least 65.

NOTICE This panel gives basic entry requirements only – for complete entry requirement information, including specific subjects required, please go to www.rvc.ac.uk/undergraduate/bscbvetmed/entrancereq.cfm

Need to know more?

+44 (0) 20 7468 5147
www.rvc.ac.uk
www.ucas.com
www.tobeavet.com

your work experience, and about any current, scientific, farming or other animal-related issues. For this course in particular we would want to see evidence of your underlying interest in science.

You will be asked to fill in some questionnaires before you come for interview to confirm details of Section 8 of the UCAS form and to obtain more details of your work experience.

Reference letters are not required, but if you wish to bring them to an interview, you should bring copies that we can keep and add to your application. Please note that if you bring case books to your interview, the selectors may be able to browse through the contents if there is time but please do not send them to the College in advance.

Notification of Outcome

You will be informed of the outcome of your application through UCAS and should therefore check the UCAS website for news. We will make every effort to reach a decision as quickly as possible, but will take the time necessary to ensure careful consideration of each application. If you are invited to attend an interview it is unlikely that you will receive a final decision on your application until all interviews have taken place which will not be before mid-March.

Entry Profiles

Further information about the course and application processes can be found in the Entry Profile on the UCAS website (www.ucas.com).

Further Information

To find out more about veterinary medicine go to www.tobeavet.com. Here you will be able to see what sort of skills you will need, view student profiles and much more. You will also be able to find information about alternative careers.

BVetMed Accelerated Programme

D102 | Four-year course (includes specially designed graduate first year)

If you are a graduate or in your final year of a biological sciences degree, you can apply for an accelerated version of our renowned BVetMed programme.

The four-year graduate programme enables you to supplement your existing skills base, adding to the preclinical science information covered by a previous biological science degree. On successful completion of the introductory graduate year, you will enter the BVetMed course at the start of Year Three, leading to completion of the BVetMed in a total of four years.

Pre-sessional Programme for North American Graduates

Successful graduate candidates from North America must attend a specially designed pre-sessional programme. This programme runs immediately preceding the start of the BVetMed Accelerated Programme. For more information, please contact the Admissions Office.

Programme Content

The first year of this programme calls for a determined, self-motivated approach to learning. It consists of three modules, each divided into units. Each unit consists of ten or so lectures, each lecture series being rounded off by a clinically oriented seminar from one of our clinical staff. Within each unit, lecturers will provide introductions to each new subject as well as an overview and 'road-map' showing how to take the subject further. The emphasis is very much on independent study, directed reading, problem-oriented and directed learning, practical anatomy classes and dissections, and histology reviews through microscope use and electronic media.

Module One

Locomotor

- Introduction to Histology of tissues
- Muscle structure, function and development
- Bone and cartilage development, form and function
- Nerve cells, action potentials, synapses and neuromuscular junctions
- Tendons, ligaments, skin, hoof and horn.

Organs of Digestion

- Oral cavity and teeth
- GI tract: Animals with simple stomachs
- GI tract: Carnivore and herbivore specialisations
- GI tract: Regulation, motility and secretion
- Clinical aspects of gut: diarrhoea.

Renal and Urinary Tract

- Development, anatomy, vascularisation
- Regulation of excretory function
- Regulation of water, Na, K and mineral balance
- Acid/base balance
- Clinical aspects and effects of diuretics.

Endocrine Systems

- General principles and clinical importance
- The hypothalamic-pituitary axis
- Control of blood glucose; thermoregulation
- Thyroid structure and function
- Adrenal structure and function.

Nervous System

- Brain Development, form and function
- Cranial nerves
- Development, form and function of auditory and visual pathways
- Peripheral nervous system/autonomic nervous system
- Motor and sensory pathways of brain and spinal cord.



Essential Information

Course type BVetMed Accelerated Programme

UCAS Code D102

Institution Code RVET R84

Entry requirements for D102

Undergraduate degree Minimum 2:1 in an appropriate biological science degree.

BMAT All applicants (except non-EU international students) for D102 must take the BMAT in the year of application. www.bmat.org.uk

Undergraduate degree from North America

Minimum GPA of 3.4 in a science-based degree with specific prerequisites required.

IELTS 6.5 or above for applicants whose first language is not English.

Pearson Test of English Overall score of at least 65.

Work Experience Recent experience working with animals required. Minimum four weeks experience – two weeks in veterinary practice and two weeks in different animal environments.

NOTICE This panel gives basic entry requirements only – for complete entry requirement information, including specific subjects required, please go to www.rvc.ac.uk/undergraduate/bvetmedacc/entry.cfm

Reproduction

- Male and female reproductive systems
- Sperm maturation and fertilisation
- Oestrus cycle and pharmacological control
- Implantation, placentation and parturition
- Mammary gland and lactation.

Cardiovascular and Respiratory Systems

- Development of the heart and foetal circulation
- Structure and function of the heart and blood vessels
- Cardiac cycle, electrophysiology, cardiac output and haemostasis
- Respiratory tract, lungs, larynx and pharynx
- Gaseous exchange and neural control of ventilation.

Module Two

Veterinary Pathology

- Degenerations and infiltrations
- Necrosis and post-mortem changes
- Pigmentation and mineralisation
- Acute and chronic inflammation/anti-inflammatory drugs
- Circulatory disorders.

Veterinary Immuno-Pathology

- Cells of the immune system/Principles of innate and adaptive immunity
- Principles of drug action and toxicity
- Vaccines and vaccination
- Immunodeficiencies and autoimmunity
- Growth disorders.

Virology

- Virus replication
- Pathogenesis of viral infections and tumour viruses
- Diagnosis of viral diseases and epidemiology
- Emerging evolving and notifiable diseases
- Immune evasion by viruses.

Need to know more?

+44 (0) 20 7468 5147

www.rvc.ac.uk

www.ucas.com

www.tobeavet.com

www.aavmc.org/vmcas/vmcas.htm

BVetMed Accelerated Programme

D102 | Four-year course (includes specially designed graduate first year)

Parasitology

- Ectoparasites
- Parasites of the alimentary tract
- Parasites of the respiratory tract
- Parasites of the cardiovascular system
- Parasitic zoonoses and emerging diseases.

Bacteriology

- Bacterial structure and growth
- Bacterial genetics
- Antimicrobial drugs
- Antimicrobial resistance
- Bacterial pathogenicity.

Module Three

Animal Husbandry

- Health and safety in working with animals
- Introduction to extra-mural studies
- Animal welfare
- Animal behaviour
- Equine stewardship
- Small animal stewardship
- Practicals on equine handling, small animal handling, lab animal handling.

Entry requirements

UK applicants (and those international applicants who hold equivalent degrees)

This programme is available to graduates who already hold, or expect to obtain in the current year, at least a 2:1 in an appropriate biological science degree. (Suitable degrees include but are not limited to Bioveterinary Sciences, Animal Sciences, Biochemistry, Zoology). You will also need to meet the other prescribed subject entry requirements for the BVetMed course through A Levels and GCSEs or other acceptable qualifications (see page 43).

North American applicants

Applicants from North America should be graduates or in the final year of a science related degree and must apply through VMCAS (www.aavmc.org/vmcas/vmcas.htm).

The following course prerequisites are required:

Required at Upper Level (8 semester credits each)

- Organic Chemistry with lab
- At least 4 credits in Principles of Biology or General Biology. Remainder of the credits can be in Animal Biology, Zoology, Microbiology or Genetics (all with lab).

Also required (4 semester credits each)

- Biochemistry
- Physics with Laboratory
- Mathematics or Statistics (including algebra).

Strongly recommended

General Chemistry or Inorganic Chemistry or Fundamentals of Chemistry with Laboratory.

Work Experience

You should have recent experience of working with animals. The minimum requirement is two weeks in a veterinary practice and two weeks in different animal environments.

It is not possible to transfer to the BVetMed course from a degree programme partly completed at another University. No exemption is granted from any course component.

Biomedical Admissions Test (BMAT)

The BMAT has been used for several years by Cambridge and the RVC (as well as medical schools in Cambridge, Oxford, UCL and Imperial College) as a supplementary science aptitude test to help inform the selection process. The BMAT is designed to test the

data handling and reasoning skills of candidates, and the ability to structure thoughts in extended writing exercises. Due to the very high volume of excellent applications from Home/EU students BMAT scores are used as the final ‘filter’ of the selection process to decide who is called for interview/offered a place.

All applicants for D102 (except non-EU international students) must take the BMAT in the year of application.

To confirm deadlines and examination dates and for more details please go to www.bmat.org.uk

The closing date for entries is usually at the end of September, but please check online for clarification.

Reapplication

We are normally unable to consider more than one repeat application. Applicants reapplying must take BMAT again.

English Language

Applicants whose first language is not English must have an acceptable English Language qualification e.g. IELTS at 6.5 or above.

Application Information

If you wish to be considered for the BVetMed Accelerated Programme you will need to apply through UCAS using course code D102 (apart from applicants from North America who must apply through VMCAS www.aavmc.org/vmcas/vmcas.htm). See www.ucas.com When you apply you must send academic transcripts showing all degree modules and results to the Admissions Office.

Interviews

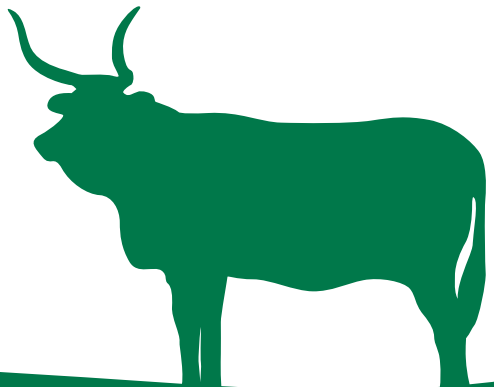
The RVC does not normally offer a place on the BVetMed without interview. Interviews for selected graduate applicants usually take place during February and March. Interviews are also held in North America from January to March.

Important Note

You may list a total of five courses on the UCAS application form, but only four can be for veterinary medicine/science courses (D100, D101 and D102).

Entry Profiles

Further information about the course and application processes can be found in the Entry Profile on the UCAS website (www.ucas.ac.uk).

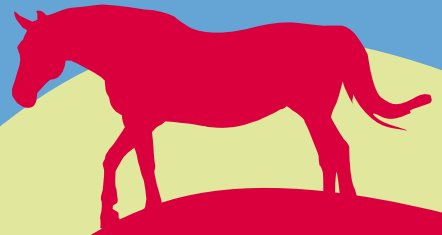


Gateway

56 *Veterinary Gateway Programme*

Did you know?

The skeleton of the great 18th century racehorse, Eclipse, is housed in the RVC museum.





Did you know?

The RVC began as a horse infirmary with only a handful of students. Today there are almost 2,000 students at the RVC, studying a range of subjects in the veterinary and allied sciences.



Veterinary Gateway Programme

Extended veterinary degree programme | D190 | Six-year course

Successfully complete this course and you'll be given a place on the BVetMed at the RVC. You'll also be eligible to apply for veterinary degrees at the Universities of Liverpool, Bristol and Glasgow, or the six year veterinary science degree at the University of Cambridge. Effectively, this course is the first year of a six (or seven) year veterinary degree programme.

Programme Content

The Veterinary Gateway Programme focuses on three key areas:

- Developing your analytical, problem-solving and practical skills in the biological sciences
- Improving your study, team-working and communication skills
- Introducing you to the handling and husbandry (control and management) of animals, most of them farm animals.

Teaching takes the form of lectures, practical classes in the lab and on the College Farm, seminars, visits to relevant sites and tutorials. You will also work on assignments in groups and on your own, making good use of our extensive library and IT resources.

Eligibility

This is a Widening Participation programme and is available to UK students satisfying specific non-academic requirements. These are under review at the time of going to print. Please see our website for details. The course is not available to students outside the UK.

Determination

You will have to prove at interview that you have a good understanding of veterinary practice and of issues relating to veterinary medicine. You must demonstrate an interest in veterinary medicine and have spent time finding out about it, ideally by getting work experience at a veterinary practice and/or working with animals. Visit www.tobeavet.com for some hints and tips on the application process.

You can also gain an insight into the veterinary field by attending an RVC Easter or Summer School.

Visit www.rvc.ac.uk/education/wideningparticipation for full details of events and eligibility criteria.

In addition to your UCAS form you must also submit a Gateway Application Form, which you can download from our website: www.rvc.ac.uk/gateway; or by contacting:

The Admissions Office

Tel +44 (0) 20 7468 5147 or 5149

Email enquiries@rvc.ac.uk

This form requires you to provide a personal statement and financial information. The personal statement should:

- explain why you want to become a vet
- describe any relevant work experience you have
- outline any scientific and veterinary issues that are of particular interest to you
- list any useful skills you've gained through extracurricular activities or part-time employment.

Essential Information

Course type Veterinary Gateway Programme

UCAS Code D190

Institution Code RVET R84

Entry requirements for D190

In addition to these academic requirements, you must satisfy specific non-academic requirements which are currently under review. Please see our website for details.

A Level grades/subjects required CCC in Chemistry, Biology and any other subject except General Studies.

AS Level grades/subjects required Chemistry, Biology and any other subject(s).

14-19 Advanced Diploma Considered in addition to AL Biology and Chemistry at grade C.

GCSE At least 5 with minimum grade C, including grade B in English Language, Maths and Double Science award or Biology, Chemistry and Physics if taken separately.

BTEC/NPTC (City & Guilds) DDD in Extended Diplomas in Animal Management and Applied Science considered with specified units required.

Scottish Qualifications 5 SH grade C including Biology and Chemistry and AH including a science subject at grade C.

Cambridge Pre-U P1 in Biology, Chemistry and another Principal subject.

Welsh Baccalaureate Core accepted with AL Biology and Chemistry grade C.

International Baccalaureate 555 at Higher Level including Biology and Chemistry, 555 at Standard Level plus GCSE requirements.

Work Experience Not a requirement but is encouraged.

Gateway Application Form must be submitted in addition to UCAS form. www.rvc.ac.uk/gateway

NOTICE This panel gives basic entry requirements only – for complete entry requirement information, including specific subjects required, please go to www.rvc.ac.uk/undergraduate/vetgateway/entryrequirements.cfm

When you return your UCAS form, please send your completed Gateway Application Form and the extra documentation requested to:

The Admissions Office

The Royal Veterinary College
Royal College Street
London
NW1 0TU

Please note: without this form and documentation we cannot process your application.

Application Information

For a place on the Veterinary Gateway Programme (UCAS code D190) you must apply through UCAS in the usual way. The deadline is 15 January.

www.ucas.com

UCAS code D190

Institution code RVET R84

Entry Profiles

Further information about the course and application processes can be found in the Entry Profile on the UCAS website (www.ucas.com).

Further Information

To find out more about veterinary medicine go to www.tobeavet.com. Here you will be able to see what sort of skills you will need, view student profiles and much more. You will also be able to find information about alternative careers.



Need to know more?

+44 (0) 20 7468 5147

www.rvc.ac.uk/education/wideningparticipation

www.ucas.com

www.tobeavet.com

Nursing

- 60 *BSc Veterinary Nursing*
- 62 *Foundation Degree Veterinary Nursing*
- 64 *Top-Up Programme*
- 66 *BSc Veterinary Nursing – Based in Hong Kong*



Did you know?

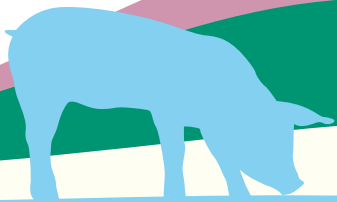
The LIVE centre, at our Hertfordshire Campus, is the only centre of excellence for teaching and learning at a UK veterinary school and houses two clinical skills laboratories which clinical students can use to practise their techniques and build their confidence.

Did you know?

Queen Victoria granted the RVC its first Charter of Incorporation in 1875.

Did you know?

The equine skeleton in the anatomy museum was used as the basis for the CGI 'Thestrals' featured in the Harry Potter movies.



BSc Veterinary Nursing

D313 | Four-year course

This exciting degree course combines a solid grounding in the practice of veterinary nursing with a stimulating exploration of the academic theory in which it is rooted. It offers at least 60 weeks' hands-on training at a range of excellent veterinary practices, our own world-leading hospitals among them, and prepares you to take on all sorts of challenging responsibilities.

Hard work and commitment are rewarded by:

- a professional qualification recognised the world over
- guaranteed and fully supported veterinary practice placements
- access to state-of-the-art veterinary school facilities
- a chance to train with other future veterinary professionals
- excellent clinical or research-based career prospects.

Programme Content

This is a four-year degree taught at our Hertfordshire Campus. For three years, you will study the same modules as students on our well-established foundation degree (see page 62).

At the end of these three years you will obtain your professional qualification entitling you to practice as a qualified Veterinary Nurse in small animal medicine.

In your final year, you will hone your research techniques and choose from a range of cutting-edge modules taught by RVC nurse educators and world-renowned clinicians from the Queen Mother Hospital. Alongside your knowledge of advances in veterinary nursing, your analytical and communication skills will evolve and by the time you graduate you will be:

- conversant with the science of the healthy and sick animal, and the science of nursing
- equipped to be a lifelong learner, an essential attribute in a rapidly changing world
- able to function as an equal intellectual partner in the veterinary team
- adaptable, and thus able to perform a variety of roles in practice and beyond.

For full course details please visit:

www.rvc.ac.uk/education/undergraduate/bscvetnurse
or for specific course information please email us at vnschool@rvc.ac.uk

Work Experience

You must have completed at least two weeks' work experience in a small animal or mixed veterinary practice. In addition, you must have completed two weeks' work experience in other animal environments, which should ideally include some experience with horses. You must supply satisfactory written references. If you have more experience, so much the better; you'll find it much easier when it comes to your work placements.

After you have applied you may be sent a supplementary form to complete in order for us to gain more information about these placements.

For more information or advice on any aspect of our entry requirements, please don't hesitate to contact the Admissions Office. You can telephone us on +44 (0) 20 7468 5147 or email us at enquiries@rvc.ac.uk

Interview

If selected for interview you will be invited to visit the College. You will have to demonstrate a clear understanding of the role of the veterinary nurse within the veterinary profession, demonstrate good communication skills and a genuine enthusiasm for the course.

Application Information

Applications for admission to BSc Veterinary Nursing should be made through UCAS during the period 1 September to 15 January for entry in the following September. It may be possible for late applications to be considered. See the UCAS website for further information about how to apply.

www.ucas.com

UCAS code D313

Institution code RVET R84

Essential Information

Course type BSc Veterinary Nursing

UCAS Code D313

Institution Code RVET R84

Entry requirements for D313

A Level grades/subjects required 160 UCAS tariff points at A2 and AS level with at least 80 points in A2 science subject (preferably Biology).

14-19 Advanced Diploma Considered with A Level in a science subject (preferably Biology) at Grade C.

GCSE At least 5 grade C in English Language, Maths and a Science.

BTEC/NPTC (City & Guilds) MPP overall in Extended Diplomas in Animal Management and Applied Science considered with specified units required.

Access Science based Diplomas with a minimum of 15 Level 3 credits in a science subject (preferably Biology) with Merits in science units taken.

Scottish Qualifications 160 UCAS tariff points from Highers or Advanced Highers to include a science subject (preferably Biology) at H grade A or AH grade C.

Cambridge Pre-U 160 UCAS tariff points with M3 or higher in a science (preferably Biology) taken as a Principal subject.

Welsh Baccalaureate 160 UCAS tariff points from A level, AS level or Core including 80 points at A2 in a science subject (preferably Biology).

The Irish Leaving Certificate Grade A in Higher Level science subject (preferably Biology) plus 4 other subject including Maths and English Language at Ordinary level grade C3.

International Baccalaureate 160 UCAS tariff points including a science subject (preferably Biology) at Higher Level grade 5.

Work Experience Minimum two weeks experience in a small animal veterinary practice and two weeks in a different animal environment.

NOTICE This panel gives basic entry requirements only – for complete entry requirement information, including specific subjects required, please go to www.rvc.ac.uk/undergraduate/bscvetnursing/entrancereq.cfm

Need to know more?

+44 (0) 20 7468 5147

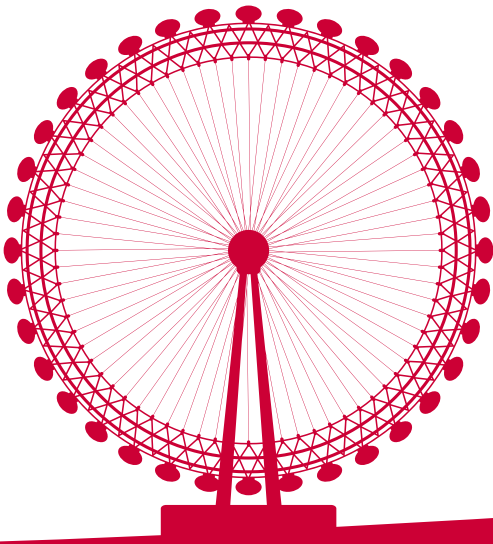
www.rvc.ac.uk

www.ucas.com

www.rcvs.org

Mature and international students are encouraged to apply, as are people with equivalent qualifications to those listed. As this course is regulated by the Royal College of Veterinary Surgeons (RCVS), all mature and international students who have not already applied to the RVC should verify that their qualifications meet the requirements of the RCVS. Please see www.rcvs.org.uk

Please note: Graduates of the BSc Veterinary Nursing are not subsequently entitled to join the BVetMed degree course or transfer part way through the degree.



Foundation Degree Veterinary Nursing

D310 | Three-year course

The RVC is the UK's largest and oldest veterinary school and the College of Animal Welfare (CAW) is a leading provider of veterinary nursing education. Together, we have designed a unique foundation degree that provides unbeatable practical training underpinned by proven academic excellence.

Hard work and commitment are rewarded by:

- a combined academic and professional qualification in three years
- guaranteed and fully supported veterinary practice placements
- access to state-of-the-art veterinary school facilities
- a chance to train with other future veterinary professionals
- a direct pathway to a BSc Veterinary Nursing (subject to satisfactory progress and completion of extension papers)
- excellent career prospects.

Programme Content

This is a three-year degree programme taught at our Hertfordshire Campus. A broad programme of learning offers a fascinating introduction to veterinary nursing ranging from professional development and clinical skills to more advanced modules such as diagnostic techniques.

You will also complete at least 60 weeks of practical training at a range of excellent veterinary practices, giving you real insight into the day-to-day role of the veterinary nurse. To ensure fair evaluation, the skills and knowledge you acquire will be assessed in a variety of ways as the course progresses. Successful completion of the course leads to a professional qualification entitling you to practice as a qualified veterinary nurse in small animal medicine.

For full course details please visit www.rvc.ac.uk/undergraduate/foundationnursing or for specific course information please email us at vnschool@rvc.ac.uk.

Work Experience

You must have completed at least two weeks' work experience in a small animal or mixed veterinary practice. In addition you must have completed two weeks' work experience in other animal environments, which should ideally include some experience with horses. You must supply satisfactory written references. If you have more experience, so much the better; you'll find it much easier when it comes to your work placements.

After you have applied you may be sent a supplementary form to complete in order for us to gain more information about these placements.

For more information or advice on any aspect of our entry requirements, please don't hesitate to contact the Admissions Office. You can telephone us on +44 (0) 20 7468 5147 or email us at enquiries@rvc.ac.uk

Interview

If selected for interview you will be invited to visit the College. You will have to demonstrate a clear understanding of the role of the veterinary nurse within the veterinary profession, demonstrate good communication skills and a genuine enthusiasm for the course.

Application Information

Applications for admission to Foundation Degree Veterinary Nursing should be made through UCAS during the period 1 September to 15 January for entry in the following September. It may be possible for late applications to be considered. See the UCAS website for further information about how to apply.

www.ucas.com

UCAS code D310

Institution code RVET R84

Essential Information

Course type Foundation Degree Veterinary Nursing

UCAS Code D310

Institution Code RVET R84

Entry requirements for D310

A Level grades/subjects required 80 UCAS tariff points including 40 points in A2 science subject (preferably Biology).

AS Level grades/subjects required None.

14-19 Advanced Diploma Considered with at least 40 tariff points in A Level science subject (preferably Biology).

GCSE At least 5 at Grade C including English Language, Maths and a Science.

BTEC/NPTC (City & Guilds) Extended Diplomas in Animal Management and Applied Science considered with PPP overall with specified units required.

Access Science based Diplomas with a minimum of 15 Level 3 credits in a science subject (preferably Biology).

Scottish Qualifications 80 UCAS tariff points from Highers or Advanced Highers including a science subject (preferably Biology) at grade C.

Cambridge Pre-U 80 UCAS tariff points including P3 in science subject (preferably Biology) taken as a Principal subject.

Welsh Baccalaureate 80 UCAS tariff points from A Level, AS level or Core including 40 points at A2 in a science subject (preferably Biology).

The Irish Leaving Certificate C3 in Higher Level science subject (preferably Biology) plus at least 4 other subjects at minimum Ordinary level grade C3.

International Baccalaureate 80 UCAS tariff points to include a science subject (preferably Biology) at Higher Level grade 4.

Work Experience Minimum two weeks experience in small animal veterinary practice and two weeks in a different animal environment.

NOTICE This panel gives basic entry requirements only – for complete entry requirement information, including specific subjects required, please see go to www.rvc.ac.uk/undergraduate/FoundationNursing/entrancereq.cfm

Need to know more?

+44 (0) 20 7468 5147

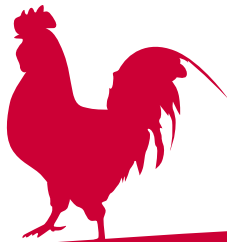
www.rvc.ac.uk

www.ucas.com

www.rcvs.org

Mature and international students are encouraged to apply, as are people with equivalent qualifications to those listed. As this course is regulated by the Royal College of Veterinary Surgeons (RCVS), all mature and international students who have not already applied to the RVC should verify that their qualifications meet the requirements of the RCVS. Please see www.rcvs.org.uk

Please note: Graduates of the Foundation Degree Veterinary Nursing are not subsequently entitled to join the BVetMed degree course or transfer to another programme.



Top-Up Programme

12 months full-time

If you have completed a Foundation Degree in Veterinary Nursing here at the RVC this programme allows you to transfer onto the BSc Veterinary Nursing course.

Programme Content

As a Top-Up student, you will be required to do a bridging assignment before joining the last year of the BSc Veterinary Nursing degree as a full time student.

Graduate Diploma

We also offer a Graduate Diploma in Professional and Clinical Veterinary Nursing. This course is aimed at Qualified Veterinary Nurses who wish to further develop their professional and clinical competence. The award is designed to be completed over a period of 20-36 months part-time and is almost entirely delivered online. In some circumstances it could be a pathway to achieving a BSc in Veterinary Nursing for mature part-time students. For full details on the Graduate Diploma in Professional and Clinical Nursing, please visit www.rvc.ac.uk/vndiploma

Entry Requirements

If you would like more information about the entry requirements and application procedures for the Top-Up Programme that is due to commence in 2012, please contact:

Hilary Orpet
Course Director
The Royal Veterinary College
Hawkshead Lane
North Mymms
Hertfordshire
AL9 7TA

Email vnschool@rvc.ac.uk

Telephone +44 (0) 1707 666660





'I wanted to undertake the diploma at the RVC as I felt that as a world renowned and established university solely dedicated to veterinary education I would have the best teaching and resources available to me. The online learning allows me to fit study around work and there is always support available from tutors and course administration, online or by telephone.'

Hayley Carne

Graduate Diploma in Professional & Clinical Veterinary Nursing

BSc Veterinary Nursing

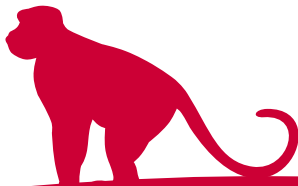
Based in Hong Kong

The RVC in collaboration with The Hong Kong Polytechnic University have developed a new full-time four year BSc degree in Veterinary Nursing.

This exciting new BSc in Veterinary Nursing, run in partnership with The Hong Kong Polytechnic University and based entirely in Hong Kong, commenced in 2010.

During the course students will spend at least 51 weeks on placement in a range of animal husbandry and small animal practice facilities. Students will follow a path of study which includes general veterinary nursing knowledge and skills, advanced veterinary nursing modules such as imaging and anaesthesia, elective modules, a research project and China studies.

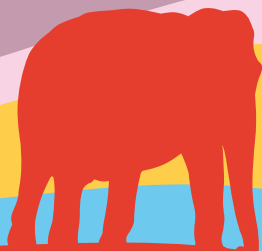
Students interested in this course should access The Hong Kong Polytechnic University web site for further information regarding admission requirements and processes: www.polyu.edu.hk





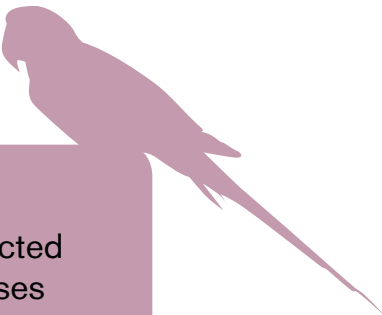
Further Information

- 70 *Finances*
- 72 *General Application Information*
- 74 *Useful Organisations*
- 75 *Important Note*
- 76 *Contacts*



Did you know?

The RVC's Learning Resources Centre houses over 30,000 volumes.



Did you know?

You can stay connected across both campuses with the RVC's extensive WiFi network.

Finances

Useful facts and figures

The RVC is currently considering its tuition fee levels and the package of financial support to be offered to students for 2012 entry. Please check the Fees and Financial support page of our website www.rvc.ac.uk/undergraduate/finances for further details.

Fees

Home/EU Students

Undergraduate course fees were set at £3,290 per year in 2010-11 for UK/EU students entitled to 'Home' fee status. It is expected that UK/EU fees for 2011-12 will be £3,375.

International Students

Fees for international students vary according to course. Fees may be paid in three instalments in September, January and April, or in full in September.

For 2011-2012 the fees are:

Veterinary Medicine (D100/D101/D102)	£19,800
BSc Bioveterinary Sciences (D300)	£8,880
BSc Veterinary Nursing (D313)	£8,880
Foundation Degree Veterinary Nursing (D310)	£8,880

Please note that international fees for D100/D101/D102 are subject to an Annual Fee uplift to a maximum of 2.5% per annum.

Deposit

International students must pay a non-refundable deposit of £1,000 when they accept a place on an undergraduate degree. Further details about this will be sent if an offer is made.

Other Expenses

In addition to fees, students require sufficient funds to cover their accommodation, travel, books and other living expenses. Information about living expenses can be found on our website at www.rvc.ac.uk/undergraduate/finances.cfm. UKCISA also provide useful information on living costs and you can find this on their website at www.ukcisa.org.uk/student/living_costs.php

Financial Advice

The RVC Student Welfare and Financial Guidance Officer is also available to give advice if you need it. Please contact sbeale@rvc.ac.uk

Financial Support

For details of the various schemes of financial support available please see www.rvc.ac.uk/undergraduate/finances.cfm

Grants and Awards

There is a constantly evolving range of schemes and conditions relating to grants and other awards for prospective university undergraduate or postgraduate students. For up-to-date information about finances, including fees, bursaries, grants and awards, please visit www.rvc.ac.uk/undergraduate/finances.cfm and www.direct.gov.uk/studentfinance

Or for further reading:

Educational Grants Directory
Available from the Directory of Social Change
24 Stephenson Way
London NW1 2DP
Telephone +44 (0) 20 7391 4800
www.dsc.org.uk

The Grants Register
Published by Macmillan Reference Limited
Available in reference libraries.



Financial Assistance

Please note: this section does not apply to all students, so please check the information carefully to ensure it applies to your own situation.

Bursaries

(UK students only)

Students eligible to receive the Government Maintenance Grant are also eligible for College bursaries. Bursary amounts for eligible students vary from course to course and are calculated according to the amount of Maintenance Grant received.

For 2011-12 the maximum bursary amounts will be:

Veterinary Medicine (D100) £1,650

BSc/BVetMed Combined (D101) £1,650

BSc Bioveterinary Sciences (D300) £1,650

BSc Veterinary Nursing (D313) £1,650

Foundation Degree Veterinary Nursing (D310) £1,650

Veterinary Gateway Course (D190) £4,000

Please see our website at www.rvc.ac.uk/undergraduate/finances.cfm for information about College bursaries for 2012-13.

Army Undergraduate Bursaries

(UK students only)

A small number of bursaries are available annually to provide financial support for the clinical part of the BVetMed (not more than three years) if this is your first degree. For more information, please go to www.armyjobs.mod.uk/education

Royal Army Veterinary Corps

(UK students only)

If you wish to join the Veterinary Corps, please note that financial assistance is available in the form of an undergraduate bursary for BVetMed students in their final three years in return for a minimum of four years' service.

Applicants for bursaries are encouraged to join the University Officer Training Corps first.

For more information please go to:

www.army.mod.uk/education

Scholarships

International Scholarships

Four scholarships for international students are available; three are available for students entering the BVetMed course at a value of £19,320 each, and one will be available from September 2011 for BSc Bioveterinary Sciences students at a value of £8,880. More information about this is available at www.rvc.ac.uk/international

Financial Difficulty

If you find yourself in difficulty, you are currently eligible to apply for financial assistance from the Access to Learning Fund (UK and EU students only) or the RVC Hardship Funds (all students).

General Application Information

Non course-specific

Applying through UCAS

Applications for undergraduate degree courses based at the Royal Veterinary College must be directed through the Universities and Colleges Admissions Service (UCAS), apart from North American graduate applicants to the accelerated BVetMed course who must apply through VMCAS.

UCAS

Rosehill
New Barn Lane
Cheltenham
Gloucestershire GL52 3LZ
Telephone 0871 468 0468 (from within the UK) and +44 (0)871 468 0468 or +44 (0)330 333 0230 (from outside the UK).
www.ucas.com

For all full-time higher education courses at universities and colleges in the UK, students must apply online at www.ucas.com. If you choose to apply to more than one course, university or college you need to pay £21 when you apply. If you only apply to one course at one university or college, you pay £11.

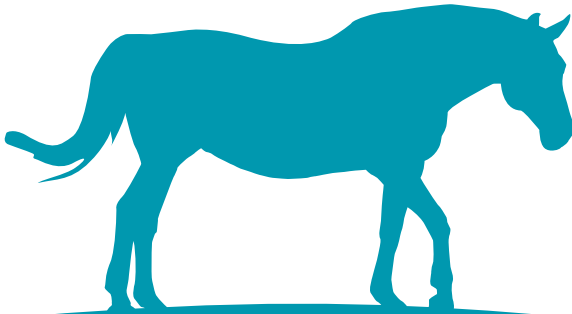
There are three types of applicant:

1 Students at a school or college registered with UCAS

All UK schools and colleges (and a small number of establishments overseas) are registered with UCAS to manage their students' applications. You will need to obtain a 'buzzword' from your tutor or careers adviser in order to register with UCAS. This establishes the organisation from which you are applying and allows your referee to attach your reference. Once you have completed your application submit it to your referee, who will send it to UCAS on your behalf. You can pay for your application online by credit or debit card, or by paying your school or other registered centre, who will then pay UCAS.

2 Independent applicants in the UK

Other UK applicants who are not at school or college should apply online independently and are responsible for paying the correct application fee, for obtaining and attaching the academic reference and for submitting the completed application online to UCAS. Your referee should know you well enough to write about you and your suitability for higher education. UCAS will not accept references from family, other relatives or friends. You will need to make your payment online using a credit or debit card.



3 International applicants outside the UK (EU and worldwide, *except North American applicants applying for the BVetMed programme who apply through VMCAS*) Individuals from the EU (excluding the UK) and worldwide should apply online independently, unless their school or college is registered with UCAS. Advice is available from British Council offices and other centres overseas, such as your school or college. You are responsible for paying the correct application fee, for obtaining and attaching the academic reference and for submitting the completed application online to UCAS. Your referee should know you well enough to write about you and your suitability for higher education. UCAS will not accept references from family, or other relatives or friends. You will need to make your payment online using a credit or debit card.

If you require further information and advice, you can contact the UCAS Customer Service Unit, open Monday to Friday, 08:30 to 18:00 (GMT) on 0871 468 0468 from within the UK or on +44 (0)871 468 0468 from outside the UK.

Deferred Entry

We consider applicants who wish to defer entry until after a gap year, but offer conditions must be met in the same academic year as the application. If you decide not to apply until the beginning of your gap year, please remember that if you are selected for interview, this may be scheduled during the period December to March.

Conditional Offers Not Met

Applicants holding offers from the RVC who fall slightly below the grades required are always reconsidered by the Admissions Committee in August and may be offered entry if places are available.

Clearing

Our BVetMed courses (D100, D101 and D102) and our Gateway programme (D190) do not go into Clearing. However, places on the BSc Bioveterinary Sciences (D300), BSc Veterinary Nursing (D313) and FdSc Veterinary Nursing (D310) may be available. Please contact the College at the earliest opportunity if you are interested in one of these courses.

Reapplication

In view of the large number and high quality of new candidates coming forward each year, we are normally unable to consider more than one repeat application. Your previous application and accompanying documents/correspondence will be attached to your new application. If the course requires the BMAT this must be retaken on reapplication. See specific course information if you are resitting any qualifications.

Visa Requirements

To find out if you need a visa to come to the UK, use the UK Border Agency interactive questionnaire at www.ukvisas.gov.uk/en/doineedvisa

The UK Government has introduced a points based immigration system for those requiring a visa. Further information can be found on the UK Border Agency website at www.bia.homeoffice.gov.uk/studyingintheuk

Advice is also available from UKCISA at www.ukcisa.org.uk/student/immigration.php

Useful Organisations

Royal College of Veterinary Surgeons

Belgravia House
62-64 Horseferry Road
London SW1P 2AF
Telephone +44 (0) 20 7222 2001
Fax +44 (0) 20 7222 2004
www.rcvs.org.uk

British Veterinary Association

7 Mansfield Street
London W1G 9NQ
Telephone +44 (0) 20 7636 6541
Fax +44 (0) 20 7908 6349
www.bva.co.uk

British Veterinary Nursing Association

82 Greenway Business Centre
Harlow Business Park
Harlow
Essex CM19 5QE
Telephone +44 (0) 1279 408644
Fax +44 (0) 1279 408645
www.bvna.org.uk

College of Animal Welfare

6 Eaton Court Road
Colmworth Business Park
Eaton Socon
St Neots
Cambs PE19 8ER
Telephone +44 (0) 844 372 9410
Fax +44 (0) 844 372 9411
Email admin@caw.ac.uk
www.caw.ac.uk

University of London

Senate House
Malet Street
London WC1E 7HU
Telephone +44 (0) 20 7862 8000
www.london.ac.uk

American Veterinary Medical Association

1931 North Meacham Road - Suite 100
Schaumburg, IL 60173-4360, USA
Telephone 800-248-2862
Fax 847-925-1329
Email avmainfo@avma.org
www.avma.org

Veterinary Medical College Application Service

(VMCAS)
1101 Vermont Ave NW
Suite 301
Washington DC 20005
USA
Telephone 877-862-2740
Email vmcas@aavma.org
www.aavmc.org

UCAS

Customer Service Unit
UCAS
PO Box 28
Cheltenham GL52 3LZ
Telephone 0871 468 0 468
Overseas telephone +44 871 486 0 468
Email enquiries@ucas.ac.uk
www.ucas.com

Important Note

All students will be required as a condition of enrolment to abide by, and to submit to, the procedures of the Royal Veterinary College's (RVC) Rules and Regulations as amended from time to time.

A copy of the current rules and regulations is available on request, from the RVC, and is available to all students at the time of enrolment.

The RVC will use all reasonable endeavours to deliver courses in accordance with the descriptions set out in this prospectus. However, the RVC does not provide education on a commercial basis. It is also very largely dependent upon charitable and public funds, which the RVC has to manage in a way which is efficient and cost-effective. In addition, the RVC continually strives to improve the content and delivery of its courses.

It therefore:

- reserves the right to suspend recruitment to a course or make variations to the contents or methods of delivery of courses if such action is reasonably considered to be necessary by the RVC
- cannot accept responsibility and expressly excludes liability for damage to or loss of students' property.

Students will need to purchase all essential equipment, including protective clothing, for their own use during the course. Students will also be expected to purchase text books, and charges are made for certain lecture notes.

As a new graduate of the BVetMed degree, before you can practise as a veterinary surgeon, you must register your BVetMed degree with the Royal College of Veterinary Surgeons (RCVS).



Contacts

www.rvc.ac.uk

+44 (0) 20 7468 5000

London Campus

Royal College Street

London NW1 0TU, UK

Telephone +44 (0) 20 7468 5000

Fax +44 (0) 20 7388 2342

Admissions Office

For all undergraduate application enquiries

Telephone +44 (0) 20 7468 5147 or

+44 (0) 20 7468 5149

Email enquiries@rvc.ac.uk

Education Liaison Office

For enquiries from schools and colleges

Telephone +44 (0) 20 7468 1257

Email schools@rvc.ac.uk

Widening Participation Office

For enquiries about the work of the Widening Participation Office

Telephone +44 (0) 20 7468 1201

Disability Officer

For enquiries concerning applicants with disabilities

Telephone +44 (0) 20 7468 1180

Email disability@rvc.ac.uk

London Campus Library

Telephone +44 (0) 20 7468 5162

Hertfordshire Campus

Hawkshead Lane

North Mymms

Herts AL9 7TA, UK

Telephone +44 (0) 1707 666333

Fax +44 (0) 1707 652090

Students' Union Society

Telephone +44 (0) 1707 666310

Email sucommunications@rvc.ac.uk

Hawkshead Campus Library

Telephone +44 (0) 1707 666457

Find us on Facebook www.facebook.com – search for *The Royal Veterinary College* and *New Faces at the RVC*.

Follow us on Twitter www.twitter.com – search for *RVC Admissions*.

The Royal Veterinary College welcomes applications from people from all backgrounds.

Our equality policy can be found at www.rvc.ac.uk/aboutus/policyandlegal/humanresources

Whilst all reasonable care has been taken in the compilation of this publication, the College can accept no liability which might arise from an unintentional inaccuracy or from such changes as may take place from time to time. Readers are recommended to verify current circumstances for themselves whenever there is a need to do so. Any enquiries relating to this prospectus or to the work of the Royal Veterinary College should be addressed to:

Admissions Office

Royal Veterinary College

Royal College Street

London NW1 0TU, UK

Telephone +44 (0) 20 7468 5147 or 5149

Email enquiries@rvc.ac.uk

The College has charitable status.



Published by the Royal Veterinary College, London
Designed by Harrison + Co, Brighton
All photography by Phillip Meech unless otherwise marked

Printed by Newgate Concise on Greencoat Silk



Established in 1791, the RVC is the UK's longest-standing veterinary college – with a proud heritage of innovation in veterinary science, clinical practice and education.

